

**MAY HISTORY TALK
THURS., MAY 14, 2026 AT 6PM**



*The History
of
Railroads
in Palisade*

May's History Talk is Matt Darling, the Curator of Cross Orchards, who will discuss the fascinating story of the significant impact the railroads had on the growth and prosperity of Palisade. Every detail is discussed from the fact that the railroads did not go through Palisade until 1890 up to modern trains of today. **(Black & white photo courtesy D&RGW; Color photo courtesy Doug Lilly Photography)** The talk will begin at 6 p.m. on Thursday, May 14th at the Palisade Community Gym (711 Iowa Ave, Palisade, CO 81526), but feel free to come early to socialize!



You are welcome to bring in your own food & beverages to enjoy during the History Talk! Some tables & chairs will be set up for your convenience. No reservations are needed. Admission is free, and donations are appreciated. We hope to see you there!

Please note: With the Elberta Roundabout Construction Project affecting US Hwy 6 and Iowa Street, use an alternate route from 5th Street & Peach Street to 7th Street.

2026 - A YEAR OF SPECIAL CELEBRATIONS!

This year, 2026, America turns 250 and Colorado turns 150 years old. In honor of this, a Smithsonian Exhibit is coming to the Western Slope!



AMERICANS



The Smithsonian Museum's traveling exhibit called "Americans" will arrive at the White River Museum at 517 Park Ave in Meeker on May 15 and will continue on display there through July 5.

**May 16 -
July 5, 2026**



The Old West Heritage Culture Center of the White River Museum

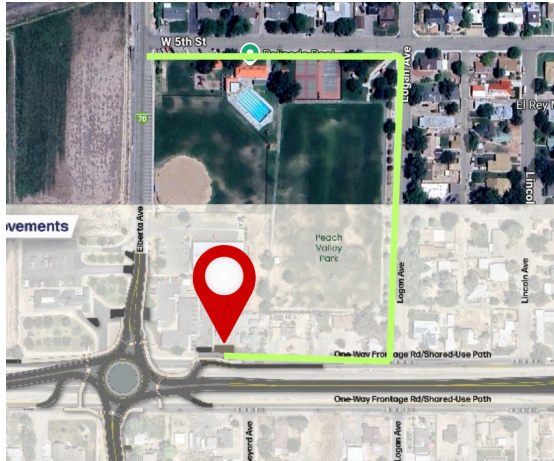
The exhibit was developed by the Smithsonian's National Museum of the American Indian. According to the Smithsonian, the exhibit explores the prevalence of American Indian images, words and stories in American history and contemporary life. Check out rbchistory.org for more info!



[Click here to learn more about other special Sesquicentennial milestones!](#)

BEST ROUTE TO THE MUSEUM

The Elberta Roundabout Construction Project is underway! The roads may be closed, but the Museum is accessible! Here is a general map on how to reach us. This graphic from CDOT superimposed on a Google Map shows where the Roundabout will be.



From the Soon-to-be Roundabout go to 5th Street (however you can get there!) and take it to Logan, then take Logan south to the north frontage road (8th Street) and then come west to the Museum (red pin)! Please be patient as we all navigate these changes!

VISIT THE MUSEUM



The Palisade History Museum is open four days a week: Tuesdays, Thursdays, Fridays, and Saturdays from 10am to 2pm. Stop in and see us at 3740 G Road. Every time you visit, something new (and old!) will catch your eye!

MAY HOURS

PALISADE
History Museum
HOURS
MAY 2026

SUN	MON	TUE	WED	THU	FRI	SAT
26	27	28 10am - 2pm	29	30 10am - 2pm	1 10am - 2pm	2 10am - 2pm
3	4	5 10am - 2pm	6	7 10am - 2pm	8 10am - 2pm	9 10am - 2pm
10	11	12 10am - 2pm	13	14 10am - 2pm <i>History Talk 6pm</i>	15 10am - 2pm	16 10am - 2pm
17	18	19 10am - 2pm	20	21 10am - 2pm	22 10am - 2pm	23 10am - 2pm
24 31	25	26 10am - 2pm	27	28 10am - 2pm	29 10am - 2pm	30 10am - 2pm

*Our Monthly History Talk is at
The Palisade Gym - 6pm - 711 Iowa Ave*
HISTORICPALISADE.ORG

FREE SEARCHABLE DATABASE



There are 5,034 issues of *The Palisade Tribune* available on the Colorado Historic Newspapers and Plains to Peaks Databases. All available issues from June 6, 1903 to December 25, 2003 are available for searching, with more on the way, and look at these exciting stats! Check out our Newspaper Tab on HistoricPalisade.org for more information!



PALISADE
Historical Society
P.O. Box 631
Palisade, Colorado 81526
www.historicpalisade.org

PALISADE FARM FEST - MAY 2ND

Join the Palisade Historical Society and other organizations at Palisade Farm Fest 10am to 4pm on May 2nd.



The Historical Society will be in downtown Palisade at the north end of Main Street where you can also explore a delightful array of local growers, vendors, and educational seminars throughout the day. Palisade Farm Fest also has local growers, vendors, and booths at the Veteran's Memorial Park on Main Street.

The Market at Farm Fest is free to attend, and families are encouraged to enjoy a fun-filled day experiencing what makes Palisade so special! Tickets for the Beer Garden (optional) are available along with more information here:

<https://www.palisadefarmfest.com/>

PALISADE'S MARY RAIT HONORED BY COLORADO MESA UNIVERSITY



(Continued...)

COLORADO MESA UNIVERSITY DEDICATES BRONZE SCULPTURE TO PALISADE'S MARY RAIT (Cont.)

On April 10th, Colorado Mesa University, celebrating its 101st year, unveiled a beautiful bronze sculpture of Mary Rait (**below**) who was on



the original faculty in 1925 when it opened as Mesa Jr. College. Mary's family moved to Palisade in 1908 and she graduated from Mt. Lincoln School in 1914. In 1937, she was appointed vice president, at the college — a position practically unheard of for a woman at the time — which furthered her career as one of most respected educators in the state of Colorado. During Mary Rait's 35-year tenure at Mesa College, she was a full-time professor in addition to serving as the Dean of Women and Vice President.

The bronze statue is on a wooden bench so you can sit next to her, and was made by artist Scott Shaffer, the same sculptor who created the Bulldog sculpture at Palisade High School.

Mary Rait's statue is located on CMU's campus outside of the Moss Performing Arts Center. The bronze plaque (**pictured to the left**) is located near the statue.

NEW (OLD) HOTEL PHOTO

The first hotel in Palisade was built by Samuel L. Purdy whose family came by covered wagons, arriving in 1882 and settling on a mesa near Whitewater which was later named Purdy Mesa. A talented stonemason by trade, he built the Purdy Hotel on 3rd street in Palisade in 1895 and added the west wing shortly after that. The east wing was added after the Purdy family sold the building in 1908. The hotel was later called the Palisade Hotel, Elberta Hotel, Grand Hotel, Midland Hotel, and Carolyn Hotel when it was torn down in 1959 for the parking lot behind the Palisades National Bank

Building.

The photo we have seen from the Palisade Library Collection is seen here **on the left.**

Recently,

Shelly Smith shared another photo of the hotel from her husband, Darryl, whose ancestors were the Purdy family. It included new information and historic photos. The photo **below (courtesy of Shelly and Darryl Smith)** is the newer view of the hotel with the east wing and new facade. The Purdy family is standing in front.



The Palisade Historical Society is always looking for historic photos for our collection. We appreciate Shelly sharing these and other interesting photos and information about early Palisade.

PIONEER MONUMENT COMPLETION CELEBRATION

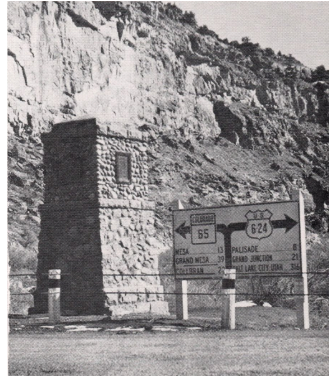
SAT., MAY 16TH 1:00PM

Don't miss the Plateau Valley Historical Preservation Society's celebration of its years-long effort to complete restoring the historic Pioneer Monument (**restored, below**) located at Interstate 70, Exit 47 on May 16 from 1 p.m. to 3 p.m.

The ceremony will include flag presentations by the Honor Guard of American Legion Lincoln Post 50 Palisade as members of the combined Grand Valley Honor Guard. The National Anthem will be sung by Megan Sheley, and the Sentimental Journey band will play a selection of 1920



and 1930s era and patriotic music led by conductor Lisa Marye. Speakers will include PVHPS Bev Duzenack who spearheaded the project and others. There will be displays of the work done to restore the monument, light snacks, and seating.



The Pioneer Monument (**original, above**) was originally located on Highway 65 near the entrance to Plateau Canyon and dedicated June 14, 1931, by the Grand Junction Elks Club 575 B.P.O.E. to celebrate the completion of the "Pikes Peak Ocean to Ocean" Highway through DeBeque Canyon. Prior to 1931, the route from Cameo was up the steep and winding Highway 65 road along Plateau Creek to the "DeBeque Cut-off" another steep road, not through DeBeque Canyon.

When the wider Interstate 70 replaced Hwy 6 & 24 through DeBeque Canyon in 1965, the monument, as well as the DePlato Trading Post, and a gas station also located at the entrance to Plateau Canyon, were moved to the current Exit 47 location. The event is free and open to the public.

THANK YOU!

Business Members



PALISADE

Historical Society

Annual Donation

Town of Palisade

Special Donation

Lions Club International of Palisade
Palisade Sunrise Rotary Club
Grand Valley Bank
GJ Rotary Foundation
Questers - Grand Mesa Peaches #1439
Rotary District 5470
Rio Grande Federal Credit Union

Lifetime Business

Memberships

Orchard Mesa Irrigation Company
Palisade Pedicab

10-Year Business Memberships

Carboy Winery - Grand Valley
JR's Carriage Service
Pali-Tours
Palisade Chamber of Commerce

Annual Business Memberships

Altrusa International of Palisade
Dancing In My Head Photography
Dennis Cole - Cole Orchards
Kokopelli Farm Market (15+ years!)
Palisade Basecamp RV Resort
Palisade Hair Company
Peachy Pedicab
Postcards From Palisade Podcast
Wine Country Inn
Wine Valley Inn
Vines 79 Winery & Vineyard

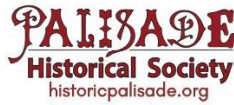
Heritage Donors to the Museum

Fruit and Wine Real Estate
Clark Family Orchards
Kokopelli Farm Market

Our Publications Available Here

Harlow Lifestyle & Gift - Palisade
Lithic Bookstore & Gallery - Fruita
Museum of Western Colorado Gift Shop - GJ
Out West Books - GJ
Palisade Basecamp RV Resort
Palisade Chamber of Commerce

**INTERESTED IN BECOMING A BUSINESS MEMBER?
CONTACT US TODAY!**




Become a Part of History - Donate to the Palisade Historical Society.

The Palisade Historical Society relies on donations to facilitate projects that enhance our community by documenting local history and promoting our heritage. You can join us with your support in a targeted way that interests you most, or just make a general donation. Make a donation for any or all of the following categories:

- Become a **Member**
- Contribute to **The Palisade Tribune Digitization Fund**
- Donate to the **Palisade History Museum**
- Make a **General Donation**

<p style="text-align: center;">Membership Options</p> <p>Annual Memberships Individual \$25 <input type="checkbox"/> Family \$50 <input type="checkbox"/> Business \$100 <input type="checkbox"/> Patron \$500 <input type="checkbox"/></p> <p>Extended Memberships 10-year (Family or Individual) \$200 <input type="checkbox"/></p>	 Memberships
---	--

<p style="text-align: center;">Palisade Tribune Digitization Fund</p> <p>We have raised funds to digitize 4,617 issues of The Palisade Tribune for the Colorado Historic Newspapers Collection database website. Please help us get more issues online for browsing and searching from anywhere!</p> <p>\$1,000 <input type="checkbox"/> \$100 <input type="checkbox"/> Other <input type="checkbox"/> \$ _____</p>	 Donations
<p style="text-align: center;">Palisade History Museum</p> <p>Please help us at any level.</p> <p>\$1,000 <input type="checkbox"/> \$500 <input type="checkbox"/> \$100 <input type="checkbox"/> Other <input type="checkbox"/> \$ _____</p> <p>\$2,500 (receive a "Proud Supporter" sign) <input type="checkbox"/></p> <p>\$5,000 (advertise in the Museum for your business) <input type="checkbox"/></p>	
<p style="text-align: center;">General Donation</p> <p>Any amount is appreciated! <input type="checkbox"/> \$ _____</p>	

For credit card payments, use the QR codes above, or call 970-812-3064.
 For checks or money orders payable to Palisade Historical Society, mail them with your contact information to: **Palisade Historical Society, PO Box 631, Palisade, CO 81526**

Name

Address

City | State | Zip

Phone

Email (for newsletters)

The Palisade Historical Society is a 501(c)(3) organization. Donations are tax-deductible. Our non-profit tax ID number is 27-246812.