

PALISADE COMMUNITY GYM IS THE 2026 VENUE FOR OUR MONTHLY HISTORY TALKS!

To better accommodate the increasing number of attendees, the historic Auditorium/Gymnasium at 711 Iowa Avenue is the 2026 venue of our monthly History Talks. (We had 760+ attendees in 2025!!)



Though there won't be food & beverages sold at the Gym for our talks, **you are welcome to bring**

in your own! Some tables & chairs will be set up for your convenience.

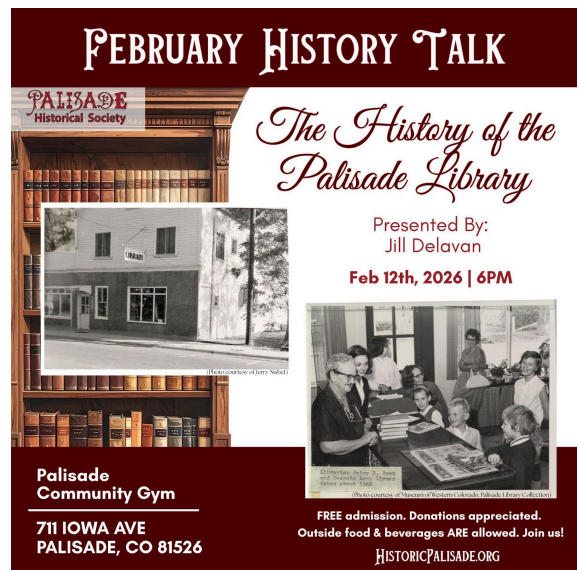
We have reserved the second Thursday of every month for our History Talks in 2026. The talks will start at 6:00 pm, and we will be there early to set up & socialize, so be sure to come early to grab a spot!

LAST MONTHS TALK WAS IRIANA MEDINA FROM LA PLAZA

January's History Talk was Iriana Medina, Executive Director of La Plaza. **(See photos above.)** She detailed the evolution of Palisade's Child and Migrant Center to its current vision which empowers the immigrant community in the Grand Valley through education, leadership opportunities, and initiatives that promote self sufficiency and equity.

FEBRUARY'S HISTORY TALK THE HISTORY OF THE PALISADE LIBRARY WITH JILL DELAVAN, 47 YEAR BOARD MEMBER

Palisade has had a public library since the 1930s, starting in Grace Duncan's living room on Bower Avenue. With four locations since then, the



determination of a group of dedicated volunteers have found ways to continue making it the successful community resource it is. The current Palisade Library is located in what was the Independent Lumber Company office at 119 West Third Street in 1911. The Library has been closed since mid-November for needed ceiling repairs.

Join us as Jill Delavan, longtime Palisade Library Auxiliary Board Member, shares this unique history of the Palisade Library. The talk will begin at 6 p.m. on Thursday, February 12th at the Palisade Community Gym (711 Iowa Ave). Admission is free, and donations are appreciated. Food & beverages will not be sold on site, but people are welcome to bring their own.

ELBERTA ROUNDABOUT CONSTRUCTION IS UNDERWAY

The intersection of Elberta and Highway 6 is under construction as a Roundabout is being added, and it will be a challenge for some time.

PALISADE
History Museum



We're open:

Tuesdays
Thursdays
Fridays
Saturdays

10am - 2pm

Road
Closed??
MUSEUM
OPEN!!



3740 G Road - Follow the Detour Signs to the north Frontage Road for Hwy 6 - Drive around the Detour Sign & come west to the Museum!

VISIT THE MUSEUM



The Palisade History Museum is open four days a week: Tuesdays, Thursdays, Fridays, and Saturdays from 10am to 2pm. Stop in and see us at 3740 G Road. Every time you visit, something new (and old!) will catch your eye!

FEBRUARY HOURS

FEBRUARY 2026 Palisade History Museum HOURS

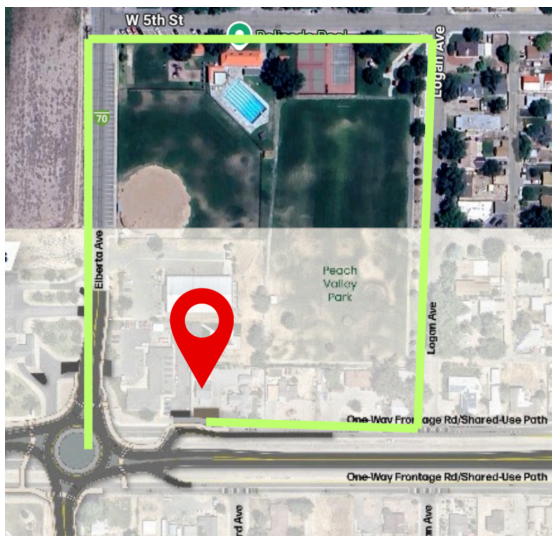
SUN	MON	TUE	WED	THU	FRI	SAT
1	2	3 10am - 2pm	4	5 10am - 2pm	6 10am - 2pm	7 10am - 2pm
8	9	10 10am - 2pm	11	12 10am - 2pm <i>History Talk 6pm</i>	13 10am - 2pm	14 10am - 2pm
15	16	17 10am - 2pm	18	19 10am - 2pm	20 10am - 2pm	21 10am - 2pm
22	23	24 10am - 2pm	25	26 10am - 2pm	27 10am - 2pm	28 10am - 2pm

HistoricPalisade.org

*Our Monthly History Talk is at
The Palisade Gym - 6pm - 711 Iowa Ave*

BEST ROUTE TO THE MUSEUM

Here is a general map on how to reach us! This graphic from CDOT superimposed on a Google Map shows where the Roundabout will be.



From the Soon-to-be Roundabout, the best way to reach us would be to go to 5th Street (however you can get there!) and take it east to Logan, then take Logan south to the frontage road (8th Street) and then come west to the Museum (red pin)! Please be patient as we all navigate these changes!

PALISADE
P.O. Box 631 Historical Society
Palisade, Colorado 81526
www.historicpalisade.org

LOG CABIN/STRAIGHT FURROWS QUILT DATES TO THE 1870s



An item dating to the 1870s when Colorado became a state is this quilt, which Ben Adams donated to the Historical Society. Betsy Tilford Goodwin, owner of Rocky Mountain Quilts where Ben bought it in 1997, described this quilt as made in Pennsylvania from an English design based on fields being plowed in rows.

This quilt uses fabrics from the 1850s. In Palisade, Betsy said she bought a lot of quilts that were brought west by families in covered wagons. It's fun to think this quilt could have been in Colorado 150 years ago in 1876 when Colorado became a state.

Historical Society Patron member Julia Brennan, an expert in the field of textile conservation for over twenty-five years in Washington, agreed the quilt dates to that period and said, "It's a pretty quilt."

150/250 DISPLAY - A YEAR OF SPECIAL CELEBRATIONS!

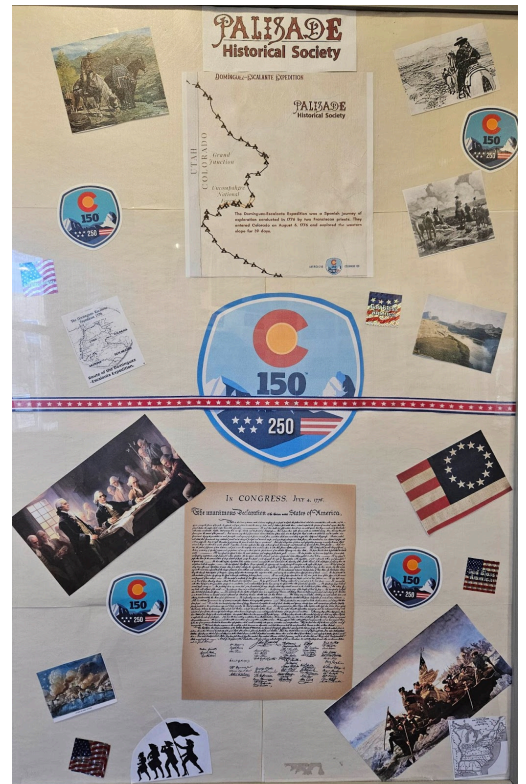


This year, 2026, America turns 250 and Colorado turns 150 years old. [Click here to learn more about these special milestones!](#)

150/250 DISPLAY - A YEAR OF SPECIAL CELEBRATIONS! (cont...)

The Historical Society began this unique celebration with two history talks last fall. In October, Carol Hunter explained the Dominguez-Escalante Expedition and her work with the educational project (DEEEP) designed to help students understand the history of the Spanish explorers who came to Colorado in 1776 looking for a route to California.

In November, Palisade's Curtis Martin explained what Colorado was like in 1876 as the "Gilded Age" for America 100 years after Independence. The Eastern Slope of Colorado was undergoing the gold rush bringing Europeans to Colorado, while the Western Slope was still unexplored. Other events, including a hike to the top of the palisades on August 1st to change the US Flag are in the planning stages.



To commemorate the year-long celebration, Joan Forrey, Museum host, created a display (**pictured above**) which will be in the History Center all year long with photos and information about the US and Colorado in 1776 and 1876.

THE HISTORY MUSEUM WELCOMED A FAMILY FROM GERMANY



A family (mother, father and daughter) came to the History Museum in December. When Museum Host Joan Forrey learned they were from Germany, she showed them the fruit worker display which includes information about the German Prisoners of War

who harvested peaches in Palisade in 1944 and 1945. Turns out, George's father was a German Prisoner in North Carolina for three years during WWII. (History Museum Visitor Rebecca, right, and her mother Ute, left, with Museum Host Joan Forrey, Center. Rebecca's father, George, took the photo.)

FREE SEARCHABLE DATABASE



There are 4,826 issues of *The Palisade Tribune* available on the Colorado Historic Newspapers and Plains to Peaks Databases. All available issues from June 6, 1903 to December 30, 1999 are available for searching, with more on the way, and look at these exciting stats!



Check out our Newspaper Tab on HistoricPalisade.org for more information!

REMEMBERING YVONNE PETERSON

Yvonne Peterson, member of the Palisade Historical Society and longtime member of the Mesa County Historical Society, passed away on Dec. 13, 2025 at the age of 91.



In this photo, courtesy of Terri Ahern, Yvonne is at the Fruita History Day at the Cavalcade, posing with a photo of her mother.

Yvonne was also a driving force in creating and maintaining the Lower Valley Heritage Room at the Fruita Civic Center. She shared photos and information about Palisade with us and will be greatly missed.

ASPINALL MEMORIAL REPAIRS COMPLETED

On April 4, 2007, the Wayne N. Aspinall Memorial was dedicated at Palisade Veterans Memorial Park. Over the years, all of the adhesives on the decorative stone pieces gave way, and it was in desperate need of repair. As you can see, these necessary repairs have been completed! Workers from Snyder Memorial removed and polished



pieces in their shop and also polished some of the decorative stone pieces on site. The fountain will be up and running

again this season, but with a decreased capacity from the original design. Stop by the Memorial at Main & 8th Street/Hwy 6 to check it out!

THANK YOU!

Business Members



PALISADE

Historical Society

Annual Donation

Town of Palisade

Special Donation

Lions Club International of Palisade
Palisade Sunrise Rotary Club
Grand Valley Bank
GJ Rotary Foundation
Questers – Grand Mesa Peaches #1439
Rotary District 5470
Rio Grande Federal Credit Union

Lifetime Business

Memberships

Orchard Mesa Irrigation Company
Palisade Pedicab

10-Year Business Memberships

Carboy Winery – Grand Valley
JR's Carriage Service
Pali-Tours
Palisade Chamber of Commerce

Annual Business

Memberships

Altrusa International of Palisade
Dancing In My Head Photography
Dennis Cole – Cole Orchards
Kokopelli Farm Market (15+ years!)
Palisade Basecamp RV Resort
Palisade Hair Company
Peachy Pedicab
Postcards From Palisade Podcast
Wine Country Ceremonies
Wine Country Inn
Wine Valley Inn
Vines 79 Winery & Vineyard

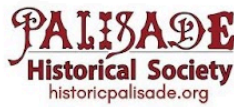
Heritage Donors to the Museum

Fruit and Wine Real Estate
Clark Family Orchards
Kokopelli Farm Market

Our Publications Available Here

Harlow Lifestyle & Gift – Palisade
Lithic Bookstore & Gallery – Fruita
Museum of Western Colorado Gift Shop – GJ
Out West Books – GJ
Palisade Basecamp RV Resort
Palisade Chamber of Commerce



**INTERESTED IN BECOMING A BUSINESS MEMBER?
CONTACT US TODAY!**



Become a Part of History - Donate to the Palisade Historical Society.

The Palisade Historical Society relies on donations to facilitate projects that enhance our community by documenting local history and promoting our heritage. You can join us with your support in a targeted way that interests you most, or just make a general donation. Make a donation for any or all of the following categories:

- Become a **Member**
- Contribute to **The Palisade Tribune Digitization Fund**
- Donate to the **Palisade History Museum**
- Make a **General Donation**

<p>Membership Options</p> <p>Annual Memberships Individual \$25 <input type="checkbox"/> Family \$50 <input type="checkbox"/> Business \$100 <input type="checkbox"/> Patron \$500 <input type="checkbox"/></p> <p>Extended Memberships 10-year (Family or Individual) \$200 <input type="checkbox"/></p>	 <p>Memberships</p>
<p>Palisade Tribune Digitization Fund</p> <p>We have raised funds to digitize 4,617 issues of The Palisade Tribune for the Colorado Historic Newspapers Collection database website. Please help us get more issues online for browsing and searching from anywhere!</p> <p>\$1,000 <input type="checkbox"/> \$100 <input type="checkbox"/> Other <input type="checkbox"/> \$ _____</p> <p>Palisade History Museum</p> <p>Please help us at any level.</p> <p>\$1,000 <input type="checkbox"/> \$500 <input type="checkbox"/> \$100 <input type="checkbox"/> Other <input type="checkbox"/> \$ _____</p> <p>\$2,500 (receive a "Proud Supporter" sign) <input type="checkbox"/></p> <p>\$5,000 (advertise in the Museum for your business) <input type="checkbox"/></p> <p>General Donation</p> <p>Any amount is appreciated! <input type="checkbox"/> \$ _____</p>	 <p>Donations</p>
<p>For credit card payments, use the QR codes above, or call 970-812-3064. For checks or money orders payable to Palisade Historical Society, mail them with your contact information to: Palisade Historical Society, PO Box 631, Palisade, CO 81526</p> <p>Name <input type="text"/></p> <p>Address <input type="text"/></p> <p>City State Zip <input type="text"/></p> <p>Phone <input type="text"/></p> <p>Email (for newsletters) <input type="text"/></p>	

The Palisade Historical Society is a 501(c)(3) organization. Donations are tax-deductible.
Our non-profit tax ID number is 27-246812.