

MAY HISTORY TALK

"Beaver Pelts and Buckskins - Fort Uncompahgre & The Old Spanish Trail"

MAY 15th - 6 PM

Join Western Colorado author and historian Dave Fishell

(pictured) as he presents the story of the first trading post in the western half of the state, and the 1,200 mile long Old Spanish Trail.



The trail once connected the important Mexican town of Santa Fe with those in southern California. The northern branch of the trail crossed through most of today's Mesa County. Fishell was the lead tour guide and historian at the reconstructed Fort Uncompahgre at Delta for several years.

The talk will begin at 6 pm on Thursday, May 15th at The Ordinary Fellow Winery. This program is open to the public in a relaxed and comfortable setting for people to learn about Palisade's unique history and enjoy a glass of wine. The tasting room opens at noon, so come early.

JUNE HISTORY TALK

THURSDAY, JUNE 19th - 6 PM

110th Birthday of the Grand River Diversion Dam

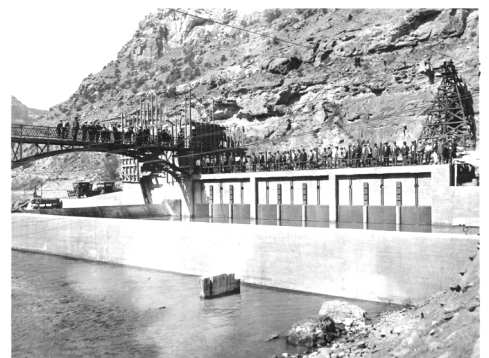
The Grand River Diversion Dam in DeBeque Canyon or "Roller Dam," as it is commonly called, is 110 years old in June! In honor of this milestone, we will host a History Talk on June 19th at 6 pm at the Ordinary Fellow

Winery. JoAnn Rasmussen, Chair of the Palisade Historical Society, will give a presentation on the history of the Roller Dam, and special guest Tina Bergonzini, Grand Valley Water Users' Association General Manager, will also share current updates. The Roller Dam is integral to the success of this valley and Palisade! Be sure to come early to get a piece of birthday cake!

Above Photo: Roller Dam taken in 2015, courtesy of Roberta Nelson.

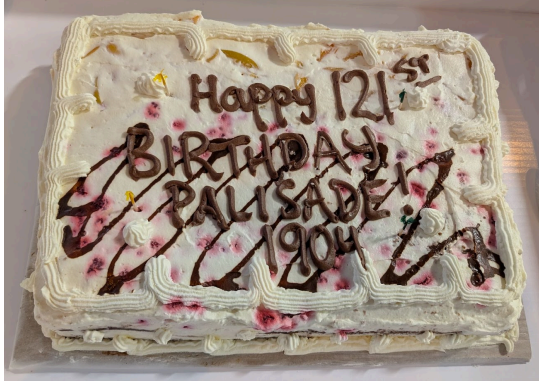
This photo is from the Dedication of the Roller Dam on June 29, 1915.

**Photo:
courtesy
of Grand
Valley Water Users' Association**



LAST MONTH'S HISTORY TALK & PALISADE'S 121st BIRTHDAY PARTY

Palisade was incorporated on 04/04/04 – yes, that's 1904! Approximately 90 people gathered to celebrate 121 years of Palisade on Friday, April 4th! A fantastic time was had by all!



The Palisade Historical Society provided a delicious cake (left) from the Slice o'

Life Bakery. The top half was peach (of course!), and the bottom half was chocolate raspberry. It was delicious!

JoAnn Rasmussen, Chair of the Palisade Historical Society, (*pictured below*) described Palisade in the early 20th century and Trish Hopkinson read her poem about living in Palisade using key phrases from the very first issue of *The Palisade Tribune* (June 6, 1903). We also enjoyed a video created for the 110th birthday 11 years ago by dedicated graphic artist and volunteer Gayle Madden, entitled "*Palisade, Colorado - 1904*," which included wonderful historic photos.

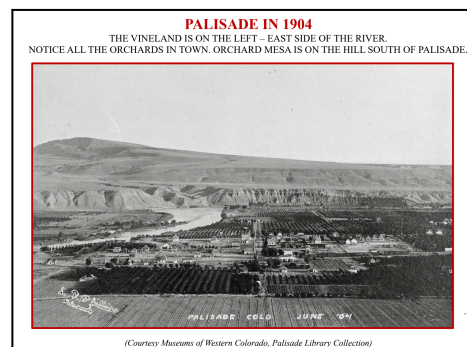
Here are more fun photos courtesy of Lisa "Moose" Levy Kral of *Dancing in My Head Photography*.



MORE PARTY PHOTOS!



Above: It was a full house at The Ordinary Fellow Winery for the 121st Birthday Party!



Left: We handed out copies of an aerial photo of Palisade from 1904, courtesy Museums of Western Colorado

Right: Volunteer Dave Cecuga poses with the publications we have available for a donation.



Left: Graphic and video artist Gayle Madden

This was such a great event, and it was fun to see so many members of the community join in the celebration of the 121 year history of Palisade!

NEW BENCH AT THE PIONEER MONUMENT

On April 23rd, a new concrete bench, courtesy of the Job Corps, was installed by CDOT on the



Pioneer Monument site at I-70 Exit 47, just north of the Exxon Service Station. Photos, left and below:

CDOT crew positions the bench into place.

This monument was initially created and dedicated in 1931 and then moved from the mouth of Plateau



Canyon to Exit 47 when the I-70 interchange was built. The Plateau Valley Historical Preservation Society took on all the significant tasks of this project to get this lovely addition to the site!



Group photo: Back l to r: Chad Toenjes, Keith Villa, Jared Schneider, Joel Berschauer, Ron Elsberry; Front l to r: Bev Duzenack and Val Dussor (both from PVHPS) were the first to sit on the new bench.

NEW BENCH (cont.)

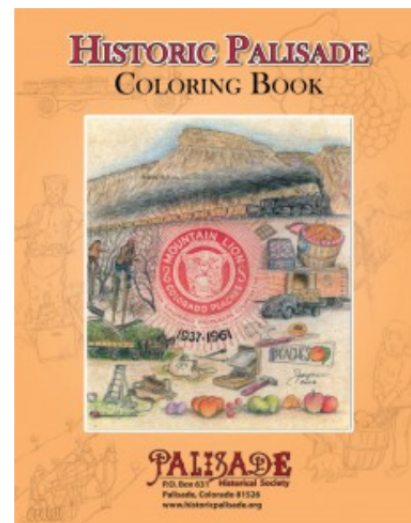
Below is a photo of the bench nestled in the shade of a tree overlooking the Pioneer Monument and the informational sign, with a gorgeous view as a backdrop.



Look for future updates, including a sandstone fence to protect the area around the Monument!

SHARING HISTORIC PALISADE WITH FUTURE GENERATIONS

One of the ways we keep Palisade history alive is



by engaging local students in learning about Palisade history through our *Historic Palisade Coloring Book* and in-school presentations.

At the end of April, we met with students from Taylor Elementary, and this month, we are scheduled

to present to students at Broadway Elementary. **June's Newsletter will showcase photos from both events, so stay tuned!**



FREE SEARCHABLE DATABASE



There are 4,361 issues of *The Palisade Tribune* available on the Colorado Historic Newspapers and Plains to Peaks Databases. All available issues from June 6, 1903 to December 27, 1990 are available for searching. Check out our Newspaper Tab on HistoricPalisade.org for more information!

YOUR PURCHASES BENEFIT THE HISTORICAL SOCIETY

The Palisade Historical Society is grateful to participate in the



Kroger
Community
Rewards

Program. If you have a Loyalty Card you can designate the Palisade Historical Society as your charity of choice.



We have a tutorial on our website (HistoricPalisade.org) under the Donate Tab!

FREE ADMISSION STOP BY IN PERSON!



The Palisade History Museum is open four days a week: Tuesdays, Thursdays, Fridays, and Saturdays from 10am to 2pm. Stop in and see us at 3740 G Road. Every time you visit, something new (and old!) will catch your eye!

MAY HOURS AT THE PALISADE HISTORY MUSEUM

MAY 2025 PALISADE History Museum HOURS						
SUN	MON	TUE	WED	THU	FRI	SAT
27	28	29 10am - 2pm	30	1 10am - 2pm	2 10am - 2pm	3 10am - 2pm
4	5	6 10am - 2pm	7	8 10am - 2pm	9 10am - 2pm	10 10am - 2pm
11	12	13 10am - 2pm	14	15 10am - 2pm	16 10am - 2pm	17 10am - 2pm
18	19	20 10am - 2pm	21	22 10am - 2pm	23 10am - 2pm	24 10am - 2pm
25	26	27 10am - 2pm	28	29 10am - 2pm	30 10am - 2pm	31 10am - 2pm

HistoricPalisade.org

Photo in calendar: Violets blooming at the
Historic Crissey House

THANK YOU!

Business Members



PALISADE

Historical Society

Annual Donation

Town of Palisade

Special Donation

Lions Club International of Palisade
Palisade Sunrise Rotary Club
GJ Rotary Foundation
Questers - Grand Mesa Peaches #1439
Rotary District 5470
Rio Grande Federal Credit Union

Annual Business Memberships

Altrusa International of Palisade
Carboy Winery - Grand Valley
Dancing In My Head Photography
Dennis Cole - Cole Orchards
Grand Valley Bank
Kokopelli Farm Market (14+ years!)
Palisade Basecamp RV Resort
Wine Country Ceremonies

Lifetime Business

Memberships

Orchard Mesa Irrigation Company
Palisade Pedicab

10-Year Business

Memberships

JR's Carriage Service
Pali-Tours
Palisade Chamber of Commerce

Heritage Donors to the Museum

Fruit and Wine Real Estate
Clark Family Orchards
Kokopelli Farm Market

Our Publications Available Here

Harlow Lifestyle & Gift - Palisade
Lithic Bookstore & Gallery - Fruita
Museum of Western Colorado Gift Shop - GJ
Out West Books - GJ
Palisade Basecamp RV Resort
Palisade Chamber of Commerce



**INTERESTED IN BECOMING A BUSINESS MEMBER?
CONTACT US TODAY!**



Become a Part of History - Donate to the Palisade Historical Society.

The Palisade Historical Society relies on donations to facilitate projects that enhance our community by documenting local history and promoting our heritage. You can join us with your support in a targeted way that interests you most, or just make a general donation. Make a donation for any or all of the following categories:

- Become a **Member**
- Contribute to **The Palisade Tribune Digitization Fund**
- Donate to the **Palisade History Museum**
- Make a **General Donation**

<div>Membership Options Annual Memberships Individual \$25 <input type="checkbox"/> Family \$50 <input type="checkbox"/> Business \$100 <input type="checkbox"/> Patron \$500 <input type="checkbox"/> Extended Memberships 10-year (Family or Individual) \$200 <input type="checkbox"/> Lifetime (Family or Individual) \$400 <input type="checkbox"/></div>	 Memberships
<div>Palisade Tribune Digitization Fund We have raised funds to digitize 4,361 issues of The Palisade Tribune for the Colorado Historic Newspapers Collection database website. Please help us get more issues online for browsing and searching from anywhere! \$1,000 <input type="checkbox"/> \$100 <input type="checkbox"/> Other <input type="checkbox"/> \$ _____</div>	 Donations
<div>Palisade History Museum Please help us at any level. \$1,000 <input type="checkbox"/> \$500 <input type="checkbox"/> \$100 <input type="checkbox"/> Other <input type="checkbox"/> \$ _____ \$2,500 (receive a "Proud Supporter" sign) <input type="checkbox"/> \$5,000 (advertise in the Museum for your business) <input type="checkbox"/></div>	
<div>General Donation Any amount is appreciated! <input type="checkbox"/> \$ _____</div>	
<p>For credit card payments, use the QR codes above, or call 970-812-3064. For checks or money orders payable to Palisade Historical Society, mail them with your contact information to: Palisade Historical Society, PO Box 631, Palisade, CO 81526</p> <p>Name <input type="text"/></p> <p>Address <input type="text"/></p> <p>City State Zip <input type="text"/></p> <p>Phone <input type="text"/></p> <p>Email (for newsletters) <input type="text"/></p>	

The Palisade Historical Society is a 501(c)(3) organization. Donations are tax-deductible.
Our non-profit tax ID number is 27-246812.