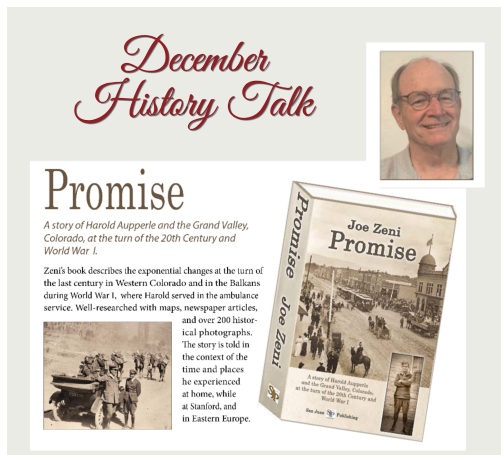


PALISADE

Historical Society

DECEMBER HISTORY TALK “*Promise*, by Joe Zeni” DEC. 12, 2024 - 5PM

NOTE THE TIME CHANGE! We'll be switching to Winter Hours in December.



Join us with Joe Zeni at **5pm** as he discusses his new book, *Promise*, which is the story of Harold Aupperle and the Grand Valley at the turn of the 20th Century and World War I where he served with the Red Cross.

Joe is a retired educator and historian, as well as a 3rd generation resident of Grand Junction. Harold Aupperle's father, David, was instrumental in getting the Government Highline Canal built which provides water to five irrigation canals serving fruit orchards in Palisade as well as for agriculture and residential use stretching through the Grand Valley to Mack.

These History Talks are open to the public at The Ordinary Fellow Winery, 202 Peach Avenue. It's a relaxed & comfortable setting to learn about Palisade's unique history and enjoy a glass of wine. The tasting room opens at noon.

December 2024

~*~

JANUARY HISTORY TALK EARLY DAYS OF CROSS ORCHARDS JAN 16TH, 2025 - 5PM

NOTE THE TIME CHANGE! We'll be switching to Winter Hours in December. Join Matt Darling, Curator of Cross Orchards Historic Site, as

he shares stories about the early days of this Historic Site. Built in the 1890s, the barn/packing shed and bunkhouse are listed on the National Register of Historic Places.



NOVEMBER'S HISTORY TALK

November's History Talk was "*Palisade: Then & Now*." JoAnn Rasmussen, Chair of the Palisade Historical Society, shared vintage photos of Palisade with their corresponding photos of today!



We time-traveled to the past as we explored various landmarks of Palisade. **Photo: JoAnn Rasmussen presents to a crowd of over 70 people.**

ROCKY MOUNTAIN PBS “PALISADE PEACHES”



On November 14, Rocky Mountain PBS broadcast their *Colorado Experience* season finale “Palisade Peaches” live from the Palisade Auditorium/Gymnasium. Following the 30 minute film, there was live discussion featuring Charlie Talbott of Talbott Farms, Gwen Cameron of Rancho Durazno, Iriana Medina from La Plaza, and Priscilla Walker, Founding Chair of the Palisade Historical Society, Rocky Mountain PBS’ Joshua Vorse introduced the program and facilitated questions from the audience and Managing Producer Amanda Horvath moderated the discussion. You can watch the hour+long program at:

<https://www.youtube.com/live/FwjNhnFnL-8?si=09XhTfxz7hnILSPY>

The program explains how Palisade has been growing the best-tasting peaches for the last 130 years in spite of spring frosts and other weather challenges, the importance of irrigation water from the Colorado River, and how marketing and shipping fruit has changed over the years. Also vital to current Palisade growers are H2A workers who make Palisade’s ability to grow fruit possible. Several workers from the sixth and seventh generation Talbott and Clark families, and also Rancho Durazno orchards, shared why they like to work in Palisade and have returned for fifteen to twenty years to be welcomed by Palisade’s peach family.

MORE ISSUES AVAILABLE OF THE PALISADE TRIBUNE!



There are now 4,154 issues of *The Palisade Tribune* available on the Colorado Historic Newspapers Database! All available issues from June 6, 1903 to December 25, 1986 are available for searching. Check out our Historic Newspaper Tab on HistoricPalisade.org for more information!

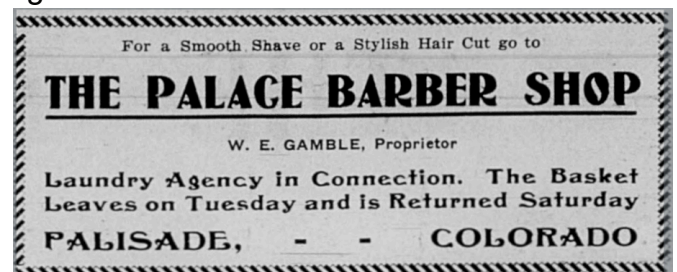
TAKING A GUIDED WALKING TOUR



(Left to right) Jennifer Kaufman, Rachel Cope, and Janet Cope came to downtown Palisade on a sunshine-filled perfect November day to take the “Fire and Brimstone” guided walking tour led by Priscilla Walker.

DECEMBER 1904 NEWSPAPER ADS

The Palisade Tribune ads in this issue are from December 1904, which is 120 years ago!



The Palisade Tribune - December 3, 1904

EXPLORE THE PALISADE HISTORY MUSEUM

The Palisade History Museum is open four days a week: Tuesdays, Thursdays, Fridays, and Saturdays from 10am to 2pm. (Or by appointment!) It's always free admission.



Stop in and see us! We're at 3740 G Road, near the corner of Elberta and the north frontage road for Highway 6.

HOLIDAY GOODS

We are showing a large assortment of holiday goods suitable for Xmas and New Year presents. The following list is simply a reminder of some of our well assorted stock:

Hand painted fruit dishes, 40 cents up.
 " " cup and saucer, 15 " "
 " " sugar and creamer, \$1.50 "
 " " vases, large ass't, 50 " "

Games of all kinds, children's trunks, trains, banks, spinning tops, 100 dressed dolls, etc. TIES AND SUSPENDERS in fancy boxes, gloves, mufflers, handkerchiefs, fancy garters, ladies' hand-bags, fascinators, knife and forks, carving sets.

J. W. HUGUS & COMPANY

*The Palisade Tribune - December 17, 1904
 The J. W. Hugus Building is where
 The Blue Pig is now.*

THE 2025 PALISADE THEN & NOW CALENDAR IS HERE!

Our 2025 Calendar is available while supplies last! It is a perfect Holiday Gift for friends, relatives, teachers, coworkers, neighbors & more!

Introducing the 2025 PALISADE THEN & NOW Calendar

Your donations support the **PALISADE Historical Society**

Cash, credit card, or checks accepted.

\$20 Suggested Donation

FOR MORE INFO: CALL/TEXT 970-812-3064
 OR EMAIL [INFO@HISTORICALPALISADE.ORG](mailto:info@historicalpalisade.org) OR VISIT HISTORICALPALISADE.ORG

Shipping cost: \$11 shipping for up to 4 calendars to a single address.
 Cost for shipping 5+ calendars will be calculated as needed.
 Free local pickup at the Palisade History Museum also available.

We are asking for a suggested donation of \$20 a piece for the calendars, and all donations go to support the Palisade Historical Society's mission of collecting, preserving, and communicating the unique history of Palisade. Talk to us if you need to arrange shipping, or we are offering free local pickup from the Palisade History Museum.

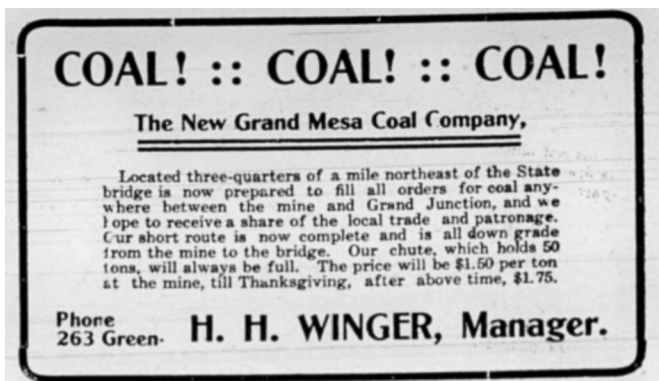
We will also have calendars available at the History Talk on December 12th. (See the top story on the front page of this newsletter for more details.)

Quantity is limited, so get yours today!

INTERESTED IN BECOMING A MEMBER OF THE PALISADE HISTORICAL SOCIETY?

We offer various levels of membership: individual, family, business, and yearly, multi-yearly, and lifetime.

Check out our Membership Options at our website HistoricPalisade.org, and/or there is a membership & donation form at the end of this newsletter, too.



The Palisade Tribune - December 3, 1904

Above: Here is an advertisement for coal;

Below: See an example of the fashions in the same newspaper issue!



PALISADE HISTORICAL SOCIETY 2024-2025 DIRECTORS

Ralph Branch – branchcolorado@gmail.com

Jaime Cox – jaimejcox@gmail.com

Nancy Eighmy – nanceyeghmy@gmail.com

Gary Hines – gwhines@msn.com

JoAnn Rasmussen – joannrasm@gmail.com

Priscilla Walker – pbwalker630@acsol.net

CONTACT US:

info@historicpalisade.org

970-812-3064

YOUR PURCHASES BENEFIT THE HISTORICAL SOCIETY

The Palisade Historical Society is grateful to participate in the Kroger Community Rewards Program. If you have a Loyalty Card you can designate the Palisade Historical Society as your charity of choice.



Program. If you have a Loyalty Card you can designate the Palisade Historical Society as your charity of choice.

We have a tutorial on our website (HistoricPalisade.org) under the Donate tab, so check it out! Questions? Just ask!

DONATE YOUR TIME



THANK YOU!

Business Members



PALISADE

Historical Society

Annual Donation

Town of Palisade

Special Donation

Lions Club International of Palisade
Palisade Sunrise Rotary Club
GJ Rotary Foundation
Rotary District 5470
Rio Grande Federal Credit Union

Lifetime Business

Memberships

Orchard Mesa Irrigation Company
Palisade Pedicab

10-Year Business

Memberships

JR's Carriage Service
Pali-Tours
Palisade Chamber of Commerce

Annual Business

Memberships

Altrusa International of Palisade
Carboy Winery
Dennis Cole - Cole Orchards
Grand Valley Bank
HQ Investments
Kokopelli Farm Market (10+ years!)
Palisade Basecamp RV Resort
Wine Country Ceremonies

Heritage Donors to the Museum

Fruit and Wine Real Estate
Clark Family Orchards
Kokopelli Farm Market

Our Publications Available Here

Harlow Lifestyle & Gift - Palisade
Lithic Bookstore & Gallery - Fruita
Museum of Western Colorado Gift Shop - GJ
Out West Books - GJ
Palisade Basecamp RV Resort
Palisade Chamber of Commerce



**INTERESTED IN BECOMING A BUSINESS MEMBER?
CONTACT US TODAY!**



Become a Part of History - Donate to the Palisade Historical Society.

The Palisade Historical Society relies on donations to facilitate projects that enhance our community by documenting local history and promoting our heritage. You can join us with your support in a targeted way that interests you most, or just make a general donation. Make a donation for any or all of the following categories:

- Become a **Member**
- Contribute to **The Palisade Tribune Digitization Fund**
- Donate to the **Palisade History Museum**
- Make a **General Donation**

<p>Membership Options</p> <p>Annual Memberships</p> <p>Individual \$25 <input type="checkbox"/> Family \$50 <input type="checkbox"/> Business \$100 <input type="checkbox"/> Patron \$500 <input type="checkbox"/></p> <p>Extended Memberships</p> <p>10-year (Family or Individual) \$200 <input type="checkbox"/> Lifetime (Family or Individual) \$400 <input type="checkbox"/></p>	 <p>Memberships</p>
<p>Palisade Tribune Digitization Fund</p> <p>We have raised funds to digitize 4,154 issues of The Palisade Tribune for the Colorado Historic Newspapers Collection database website. Please help us get more issues online for browsing and searching from anywhere!</p> <p>\$1,000 <input type="checkbox"/> \$100 <input type="checkbox"/> Other <input type="checkbox"/> \$ _____</p>	 <p>Donations</p>
<p>Palisade History Museum</p> <p>Please help us at any level.</p> <p>\$1,000 <input type="checkbox"/> \$500 <input type="checkbox"/> \$100 <input type="checkbox"/> Other <input type="checkbox"/> \$ _____</p> <p>\$2,500 (receive a "Proud Supporter" sign) <input type="checkbox"/></p> <p>\$5,000 (advertise in the Museum for your business) <input type="checkbox"/></p>	
<p>General Donation</p> <p>Any amount is appreciated! <input type="checkbox"/> \$ _____</p>	

For credit card payments, use the QR codes above, or call 970-812-3064.
For checks or money orders payable to Palisade Historical Society, mail them with your contact information to: **Palisade Historical Society, PO Box 631, Palisade, CO 81526**

Name
Address
City | State | Zip
Phone
Email (for newsletters)

The Palisade Historical Society is a 501(c)(3) organization. Donations are tax-deductible.
Our non-profit tax ID number is 27-246812.