

PALISADE

Historical Society

THE ORDINARY FELLOW WINERY MONTHLY TALK

“A Bison Tale” by

Holly “Sonny” Shelton

Thursday, Jan. 19 at 6 p.m.

The January history talk at The Ordinary Fellow Winery on Thursday, the 19th will be presented by Holly “Sonny” Shelton. She is an archaeologist, faunal analysis specialist, and field crew member for Grand River Institute and Dominguez Archaeological Research Group (DARG). In 2016, she initiated the Western Colorado Bison Project focused on prehistoric and historic occurrence and procurement of bison in western Colorado.

She will talk about her work with DARG, especially the known and recent discoveries, and explore how the collected data has expanded our knowledge of human/bison interaction specific to Western Colorado. Radiometric testing results show that bison existed here from 45,000 years ago to the late 1800s

Bison Skull
(Courtesy
Sonny Shelton)



The history talk program will begin at 6:00 p.m. on Thursday, January 19th at The Ordinary Fellow Winery – at 202 Peach Avenue in Palisade. This program is open to the public, and The Ordinary Fellow Winery is a relaxed and comfortable setting for people to learn about Palisade’s unique history and enjoy a glass of wine. As food will not be available on site, people can bring food to the program.

January 2023

Last month’s talk “Downtown Palisade Pictorial Tour”

Gary Hines showed “then and now” photos of downtown Palisade for December’s program at The Ordinary Fellow Winery. Gary normally gives guided walking tours of historic downtown Palisade, so this was easier, as the audience sat comfortably in chairs inside where it was warm to enjoy seeing how downtown buildings have changed over the years.



Check out our website: www.historicpalisade.org
Facebook and Instagram posts, and The Ordinary Fellow Winery’s social media for dates and topics of future programs.

OLDE FASHIONED CHRISTMAS EVENTS

The Palisade Historical Society participated in Palisade’s holiday celebration. Priscilla Walker’s 1930 Model A Ford was again a popular entry in the parade. Riding in the rumble seat were Santa and Mrs. Claus portrayed by Historical Society members Pete and Wanda Robinson.



Priscilla driving with Santa and Mrs. Claus in the rumble seat of the 1930 Model A Ford.

(Continued) Page 1

This year, the Historical Society entry was at the very front of the parade! Following just behind the lead Palisade Police Car were Historical Society Volunteers Christine Noel and Matt Darling holding the banner inviting parade viewers to visit the Palisade History Museum. The Model A was the first antique car in the parade.



At another Olde Fashioned Christmas event on Saturday at the Palisade United Methodist Church, we informally shared some history of the Church, including information about long-time Methodist Church member families--the Aspinalls and the Avon Taylors--and concluded by reading one of Rena Mary Taylor's Christmas poems.

Char Weidner
(in the black
hat) shares
Church history
with people
attending
Methodist
Church
festivities on
Dec. 3



Priscilla Walker
shared history
with people at
the Methodist
Church between
musical groups,
including a
wonderful
Cantata

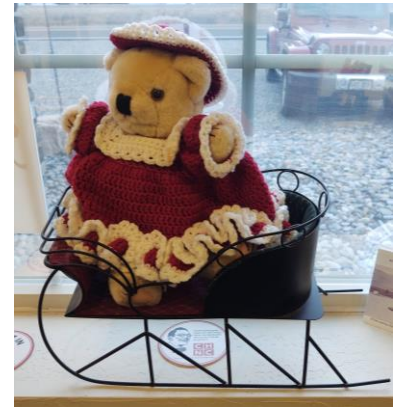
*(Photos courtesy
of Linda Rose)*



BEST WISHES FOR 2023!

If you didn't visit the Palisade History Museum in December, you missed History host and volunteer Joan Forrey's creative holiday decorations.

A Christmas
Bear sitting on a
sleigh



Festive tree and window decorations in the
front room of the History Museum

IRRIGATION LEADERSHIP CHANGES WITH NEW HYDRO PLANT

The Vinelands Power Plant has been operating since November 16, providing 1.8 megawatts of power to the grid from the Orchard Mesa Irrigation District (OMID). The capacity will increase to 4.8 megawatts when permitted by the PUC.

It has been a multi-year project. When Max Schmidt became general manager at the OMID in 2011, one of the first things on his list to update was the hydro plant which had been operating since 1933. After years of study, it became obvious a new plant was preferable to renovation.

(Continued)

Page 2

The water which operates the plant comes from the Government Highline Canal diverted at the Grand River Diversion Dam in DeBeque Canyon. The dam is operated by the Grand Valley Water Users (GVWUA) which was an equal partner in getting the hydro plant functioning as it should. Its chief executive from 2013 to 2022 was Mark Harris.



The new Vinelands Power Plant-in the building on the left-operates and returns water to the Colorado River. A new eleven-foot diameter pipe is buried east of the two visible pipes which provided water to the 1933 plant in the middle. The two visible pipes were kept as back up. The 1910 OMID Irrigation pumping plant is on the right. Its four penstocks provide irrigation water to Orchard Mesa

After researching alternatives and obtaining funding from a variety of resources, Sorenson Engineering, an experienced builder and operator of hydroelectric power plants, was chosen as a partner in 2020. At the “ribbon cutting” dedication on November 30, it was evident the group effort with everyone working together made the process go faster and smoother than expected.

Leadership Transition

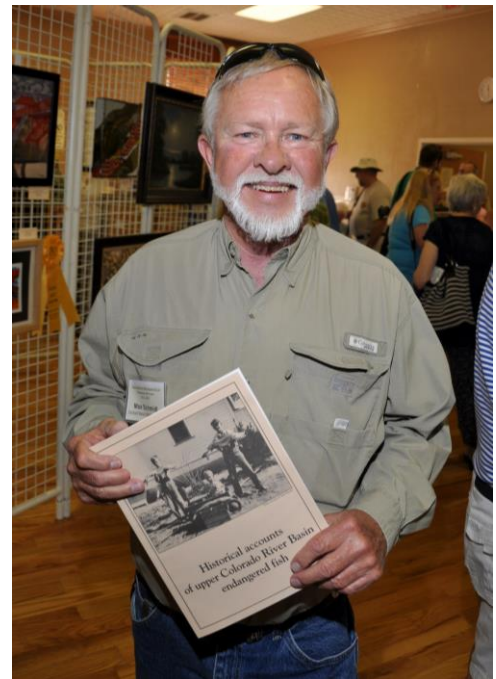
Coincidentally, it is also a time of leadership transition, as both Max Schmidt (OMID) and Mark Harris (GVWUA) are retiring from their positions. Tina Bergonzini has been GVWUA General Manager since July 27. She will be a presenter at the Thursday, February 16th history talk at 6 p.m. at The Ordinary Fellow Winery.

Beginning with planning the 100th Birthday Party for the Grand River Diversion Dam in June 2015, the Historical Society enjoyed working with Max and Mark on irrigation history projects, including
(continued)

sharing photos and memorabilia. We wish both Mark and Max the best for the next chapters of their lives and appreciate their support to help the Palisade Historical Society compile and share our unique irrigation history.



Mark Harris holds a package of fresh Palisade cherries at the Grand River Diversion Dam 100th Birthday Party. Cherries were given to attendees when the “Roller Dam” was dedicated in 1915.



Max Schmidt at the Roller Dam 100th Birthday Party in June 2015.

3,140 ISSUES OF THE PALISADE TRIBUNE NOW DIGITIZED



We have digitized 3,140 issues of *The Palisade Tribune* which are available on the Colorado Historic Newspaper Collection (CHNC) and Plains to Peaks Historic Newspaper databases. You can browse or search these issues of Palisade's newspaper of record from June 6, 1903, through December 1966. Another 200 issues will be on the databases soon. These will be all the issues we have in our archive through 1970. Leigh Jeremias from the Colorado State Library will be the presenter at our April 20 history talk at The Ordinary Fellow Winery. She will demonstrate how to access and use the databases for research.

Become a Member!

If you or your business aren't one of the current 108 members of the Palisade Historical Society, please send your check to P.O. Box 631 Palisade, CO 81526. For credit cards, call (970) 464-2177 or send your contact information on the contact tab at www.historicpalisade.org

Volunteers Welcome!

Please contact us if you want to meet interesting people, learn more about Palisade history and/or work on committees, projects, fundraising, or being a host at the Palisade History Museum. Send an email message with your contact information to historicpalisade@outlook.com to learn how you can be part of this organization.

2022-2023 Directors of the Palisade Historical Society

Ralph Branch – branchcolorado@gmail.com
Ronda Clark – rc_2040@msn.com
Jaime Cox – jaimejcox@gmail.com
Gary Hines – gwhines@msn.com
Nancy Morrison – nancykmorrison@gmail.com
JoAnn Rasmussen – joannrasm@gmail.com
Priscilla Walker – pbwalker630@acsol.net
Charlene Weidner – charw@acsol.net

AMAZON SMILE PURCHASES BENEFIT THE HISTORICAL SOCIETY

For your on-line shopping, please go to: <https://smile.amazon.com> On your first visit, you can use the same email and password as you set up for Amazon. Then, select the Palisade Historical Society from the Charity Lists. If you bookmark Amazon Smile, you will automatically be taken there instead of the regular Amazon site when you shop. Amazon will donate 0.5% of the price of your eligible Amazon Smile purchases.



You may need to renew or update your charity choice before your next purchase. It just takes a minute to update.

YOUR PURCHASES AT CITY MARKET BENEFIT THE HISTORICAL SOCIETY

The Palisade Historical Society is grateful to participate in the City Market Community Rewards Program. If you have a City Market loyalty card and have used the City Market's website, just log into <http://www.citymarket.com> and search for the Palisade Historical Society.

Select it as your designated community non-profit. It is another painless and amazingly effective way to support the Palisade Historical Society.



If you do not have an account, you will need to create one by providing some basic information, a valid email address, and a City Market/Kroger loyalty card number. You can get a loyalty card at any Kroger, King Soopers or City Market store's customer service desk. You must swipe your registered loyalty card or use the phone number attached to the card for your purchase to benefit the Palisade Historical Society.



Become a part of History - Donate to the Palisade Historical Society.

The Palisade Historical Society is a 501(c)(3) organization. Donations are tax-deductible.

The Historical Society relies on donations to facilitate projects that enhance our community by documenting local history and promoting our heritage. You can join us with your support in a targeted way that interests you most. Make a donation for any or all of the following categories:

- Become a member and enjoy notification of events and news
- Contribute to the **Palisade Tribune** Digitization Fund that will save invaluable Palisade history
- Donate to the Palisade History Museum for maintenance and creating displays about our unique agriculture and coal mining past. Help us engage with locals and visitors year-round.

MEMBERSHIP OPTIONS

Annual Memberships (check one)

Individual \$25 ☐ Family \$50 ☐ Business \$100 ☐ Patron \$500 ☐

Extended Memberships

10-year (Family or Individual) \$200 ☐ Lifetime (Family or Individual) \$400 ☐

PALISADE TRIBUNE DIGITIZATION FUND

We have raised funds to digitize 3,140 issues of *The Palisade Tribune* for Colorado Historic Newspaper Newspaper database website. Please help us get more issues online for browsing and searching from anywhere!

\$1,000 ☐ \$100 ☐ Other ☐ \$_____

PALISADE HISTORY MUSEUM

Please help us at any level.

\$1,000 ☐ \$500 ☐ \$100 ☐ Other ☐ \$_____

\$2,500 (receive a "Proud Supporter" sign) ☐

\$5,000 (advertise in the Museum for your business) ☐

For credit card payments, call (970) 464-2177.

For checks or money orders payable to Palisade Historical Society, mail them with your confidential contact information to: **Palisade Historical Society, PO Box 631, Palisade, CO 81526.**

Name _____

Address _____

City _____ State _____ Zip _____

E-mail (for newsletters) _____ Phone _____