

PALISADE

Historical Society

THE ORDINARY FELLOW WINERY MONTHLY TALKS— Coal Mines and Miners

Thursday, February 24 at 6 p.m.

The third monthly talk at The Ordinary Fellow Winery in Palisade will be about coal mining in Palisade. There were a dozen coal mines in the area which had a significant economic impact, especially in the first half of the 20th Century

History of Railroads in Palisade Thursday, March 24 at 6 p.m.

Matt Darling, curator of Cross Orchards and a devoted railfan, will present “The History of Railroads in Palisade” at The Ordinary Fellow Winery, 202 Peach Avenue. Autographed copies of his booklet published by the Palisade Historical Society will be available for donation at the event.



First Colorado Midland trainload of peaches shipped from Palisade. (Courtesy Marie Tipping Archives, Palisade Library Collection)

History of Irrigation talk last month

Gary Hines’ talk “The History of Irrigation – Waters for the Valley” on January 20 at The Ordinary Fellow was well attended by an enthusiastic crowd of mostly locals who enjoyed the relaxed setting and a glass of wine. (continued)

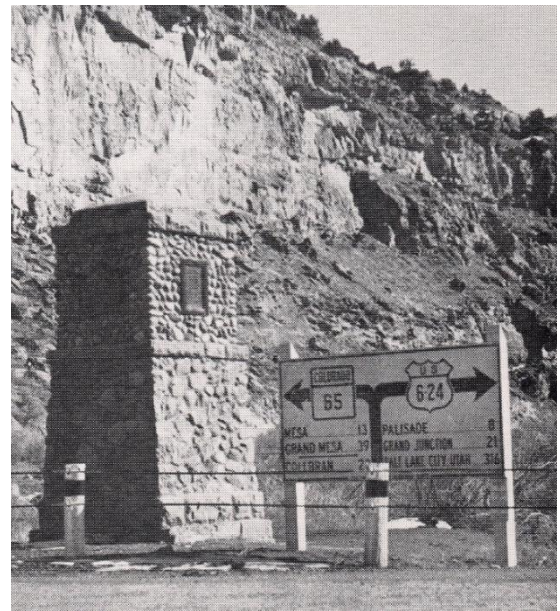
February 2022



The enthusiastic audience at Gary Hines’ January 20th talk on the History of Irrigation

Check our website: www.historicpalisade.org our Facebook page, and The Ordinary Fellow Winery’s social media for dates and topics of future Palisade history talks at the Winery.

Pioneer monument in original location at the intersection of Highway 6 & 24 and Highway 65 at the mouth of Plateau Canyon



This monument was dedicated June 14, 1931 by the Grand Junction Elks Lodge 575 B.P.O.E. The “Colorado River Highway” was dedicated to “The Pioneers of the Mountains and the Valleys of Western Colorado.”

It was meant to be a good will gesture and to spur more and better highways which are lifelines of
(continued) Page 1

the Western Slope. In 1965, when Interstate 70 was built and required more space for the interchange to Highway 65, the Monument was moved to the newly created Exit 47 where buildings – including the Fawn Gift Shop, a gas station, and restaurant were located. Initially, it was Thompson’s Corral and later, Gay Johnson bought the property and landscaped the area near the Monument. Mrs. David Anderson of Collbran was at the formal unveiling in 1931.

The Plateau Valley Historic Preservation Society has taken on the task of refurbishing the Pioneer Monument, including replacing the three missing plaques as well as landscaping and signage

If you want to donate to refurbishing the Pioneer Monument, please make your checks payable to the Plateau Valley Historic Preservation Society and mail them to P.O. Box 298, Mesa, CO 81643.

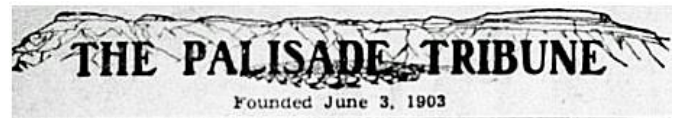
ASBESTOS REMOVAL ALMOST DONE ON THE 1925 PALISADE HIGH SCHOOL BUILDING



Remediating asbestos from the 1925 Palisade High School cost several hundred thousand dollars more than planned and should be completed the first week of February. All the glass windows and glazing were removed in the process. Demolition of the vacant building is scheduled to begin February 16, starting with the newest wing—built in the 1970s. It is hoped the distinctive columns at the doorways can be incorporated into the remaining gym/auditorium building to the north. Bricks from the iconic west wing will be piled up for those who want keepsakes of the building.

The interest long time Palisade residents continue to have for the building underscores the importance schools have to our community. For the almost 70-year life of the building, locals attended band and choral concerts, plays, and naturally, sports events when it was the high school. (continued)

Through fundraisers, individuals, and local organizations—including the Palisade Lions Club—came together to raise money for the school and students’ needs. Land for the football field was donated at what is now Peach Bowl Park. The Lions Club purchased and installed lights so well-attended night games could be played. Fundraisers for band uniforms and athletic equipment were also widely supported by the community. Proms - when food was served in the lunchroom – graduations, dances, and other happenings were also held there.



100 YEAR AGO COLUMN

For decades, one of the most popular columns in *The Palisade Tribune* was the “It Happened Here” page where the editors would summarize news of interest from issues in the past. In the early years, it was “20 Years Ago”, then 25, 50, 75 and 95 years ago. In 2004, the issues began summarizing articles from 100 years ago, as the paper was first published in June 1903.

Syble Seckinger and Historical Society Board Member Nancy Morrison were key to organizing and preserving *Tribune* archival issues in 2014 which facilitated getting them digitized for the Colorado Historical Newspaper Collection. We now have 2,650 issues available, and soon will have more. You can see the four issues of *The Palisade Tribune* printed in February 1922: <https://www.coloradohistoricnewspapers.org>

Nancy summarized local information from the four February 1922 *Tribune* issues including:

- Colorado earmarked \$50,000 of U.S. Forest service funds to complete the road from Mesa to Mesa Lakes. With three feet of snow currently in place, work would not begin until spring.

- The Masonic lodge voted unanimously (membership nearly 100) to build a new lodge at Main and 3rd. This would replace the remains of the Jordan Hotel destroyed in a fire a few years earlier. One reason given for the decision was to remove a community eyesore.

(continued)

Page 2

- The Parent-Teachers Associations began tryouts for a comedy “The Village Post Office” to raise money for purchase of a moving picture machine for use by the school.

- The Palisade High School Bull Dogs boys basketball team beat Fruita 29 to 16, Rifle 23 to 16, and Aspen 72 to 22. The girls team lost each of their match ups.

You can see all of Nancy’s February 1922 news summary at <https://www.historicpalisade.org/wp-content/uploads/2022/02/Palisade-Feb-1922.pdf>

Become a Member!

If you aren’t a current member of the Palisade Historical Society, please send your check to P.O. Box 631 Palisade, CO 81526. For credit cards, call (970) 464-2177 or include your information on our contact tab at www.historicpalisade.org

YOUR PURCHASES AT CITY MARKET BENEFIT THE HISTORICAL SOCIETY

The Palisade Historical Society is grateful to participate in the City Market Community Rewards Program. If you have a City Market loyalty card and have used the City Market’s website, just log into <http://www.citymarket.com> and search for the Palisade Historical Society.

Select it as your designated community non-profit. It is another painless and amazingly effective way to support the Historical Society.



If you do not have an account, you will need to create one by providing some basic information, a valid email address, and a City Market/Kroger loyalty card number. You can get a loyalty card at any Kroger, King Soopers or City Market store’s customer service desk. You must swipe your registered loyalty card or use the phone number attached to the card for your purchase to benefit the Palisade Historical Society.

**Look for us on Facebook and Instagram:
Palisade Historical Society**

Volunteers Welcome!

Please contact us if you want to meet interesting people, learn more about Palisade history and/or work on committees, projects, fundraising, or being a host at the new Palisade History Museum. Send an email message with your contact information to historicpalisade@outlook.com to learn how you can be part of this organization.

2021-2022 Directors of the Palisade Historical Society

Susan Barstow – susanbarstow.ak@gmail.com
Ralph Branch – branchcolorado@gmail.com
Ronda Clark – rc_2040@msn.com
Jaime Cox – jaimejcox@gmail.com
Gay Hetland – ghetland@outlook.com
Gary Hines – gwhines@msn.com
Nancy Morrison – nancykmorrison@gmail.com
Priscilla Walker – pbwalker630@acsol.net
Charlene Weidner – charw@acsol.net

AMAZON SMILE PURCHASES ALSO BENEFIT THE HISTORICAL SOCIETY

For your on-line shopping, please go to: <https://smile.amazon.com>

On your first visit, you can use the same email and password as you set up for Amazon. Then, select the Palisade

Historical Society from the Charity Lists. If you bookmark Amazon Smile, you will automatically be taken there instead of the regular Amazon site when you shop. Amazon will donate 0.5% of the price of your eligible Amazon Smile purchases. **You may need to renew or update your charity choice before your next purchase. It just takes a minute to update.**





Become a part of History - Donate to the Palisade Historical Society.

The Palisade Historical Society is a 501(c)(3) organization. Donations are tax-deductible.

The Historical Society relies on donations to facilitate projects that enhance our community by documenting local history and promoting our heritage. You can join us with your support in a targeted way that interests you most. Make a donation for any or all of the following categories:

- Become a member and enjoy notification of events and news
- Contribute to the **Palisade Tribune** Digitization Fund that will save invaluable Palisade history
- Donate to the Palisade History Museum for maintenance and creating displays about our unique agriculture and coal mining past. Help us engage with locals and visitors year-round.

MEMBERSHIP OPTIONS

Annual Memberships (check one)

Individual \$25 Family \$50 Business \$100 Patron \$500

Extended Memberships

10-year (Family or Individual) \$200 Lifetime (Family or Individual) \$400

PALISADE TRIBUNE DIGITIZATION FUND

We have raised funds to digitize 2,650 issues of *The Palisade Tribune* for Colorado Historic Newspaper Newspaper database website. Please help us get more issues online for browsing and searching from anywhere!

\$1,000 \$100 Other \$ _____

PALISADE HISTORY MUSEUM

Please help us at any level.

\$1,000 \$500 \$100 Other \$ _____

\$2,500 (receive a "Proud Supporter" sign)

\$5,000 (advertise in the Museum for your business)

For credit card payments, call (970) 464-2177.

For checks or money orders payable to Palisade Historical Society, mail them with your confidential contact information to: **Palisade Historical Society, PO Box 631, Palisade, CO 81526.**

Name _____

Address _____

City _____ State _____ Zip _____

E-mail (for newsletters) _____ Phone _____