

PALISADE Historical Society

www.historicpalisade.org

HARLOW'S GRAVESITE ESCAPES FIRE DAMAGE

The July 30 fire which started on Interstate 70 between Mile Markers 44 and 45 quickly spread up the hill to Rapid Creek. The fire swirled through the former Harlow property from three directions but cut a wide swath around John P. Harlow's grave marker,



John P. Harlow's gravestone left, with pieces of fire-damaged metal roof from the fire that came dangerously close to the marker.

Thankfully, there were no injuries, and the fire was controlled in a few hours. One home was destroyed, and several outbuildings were damaged. The Harrison's apricot orchard suffered from the intense heat, but most of the trees are expected to survive. The wood framing at Harlow's nearby house, which has been abandoned for some time, was destroyed.

Harlow's grave marker was officially added to the Colorado State Register of Historical Properties in 1995. Palisade also has two sites which are on the

(continued)

November 2020

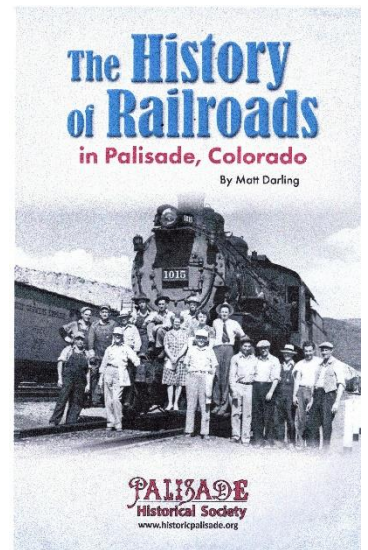
National Register of Historic Places – the Crissey House on West First Street, and the Grand River Diversion Dam in DeBeque Canyon.



Fire damaged the remaining wood framing at the stone house built by John Harlow in the 1880s.

HISTORY OF RAILROADS IN PALISADE BOOKLET NOW AVAILABLE

Our newest booklet, *The History of Railroads in Palisade, Colorado* by Matt Darling, is a 40-page booklet with photos and information about the fascinating story of how historically important the railroad was to Palisade, even though it was not on any of the routes until 1890.



Matt is also the Curator of Cross Orchards historic site of the Museums of Western Colorado and the museum's railroad historian. The printing is underwritten by the Rio Grande Federal Credit Union, a member owned, not-for-profit company whose original members were railroad employees. The booklet is available at the Museums of the West gift shop and Out West Books in Grand Junction and Lithic Bookstore and Gallery in Fruita as well as from the Historical Society. For more information: go to www.historicpalisade.org/publications.

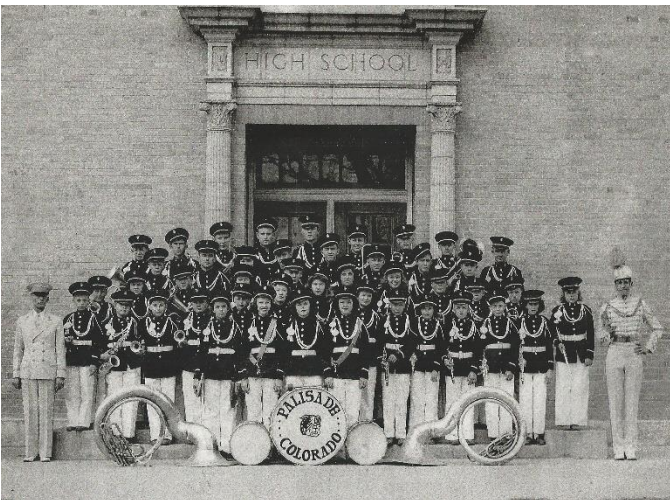
Page 1

95 YEAR-OLD PALISADE HIGH SCHOOL MAY BE DEMOLISHED FOR CLINIC



The iconic “old” Palisade High School—the most prominent historic building on the west entrance to Palisade—has been mostly vacant since the late 1990s. It has become an eyesore from years of neglect and abuse. The Town is committed to work with Community Hospital which will build a new, more suitable building for a clinic on the land.

The Palisade Historical Society and others hope the architect chosen for the project will include the building’s unique architectural features. The pilasters and capitals at the west and south entrances are distinctive and revered. In our collection are countless photos of classes and groups posed in front of the extraordinary building entrances, especially in the 1930s and 1940s.



This photo of the 1946 Band taken in front of the south entrance of the 1925 building shows the unique columns surrounding the door.

(Courtesy of Phyllis Bennett Barker)

(continued)

The proposed clinic would be located on the corner of Iowa and Highway 6 (8th Street). The first step is to remove asbestos from the existing building.

The current plan is to keep the gym building which was recently renovated and is frequently used for athletic team practices. It was built as a WPA project with great financial assistance from the Palisade Lions Club. The auditorium-gymnasium was formally dedicated in October 1940. At the time, it was the largest basketball court in Western Colorado. The Town is also considering adding workout facilities, exercise rooms and showers to the gym.

Please direct comments and questions to Town Board members or attend their meetings.

NOTICEABLY LOW COLORADO RIVER

With record drought in Colorado, the Colorado River is visibly low, which you can see from the photo below taken the last week of October near the diversion for the Grand Valley Canal. The diversion weir in the center channels virtually all the River water towards its headgate on the west side, leaving bare riverbed on the left.



By comparison, the photo, below was taken in July 2019 and clearly shows how high the River was a year and a half ago after good winter snowfall.



PLEASE INCLUDE THE PALISADE HISTORICAL SOCIETY IN YOUR YEAR-END GIVING

The Palisade Historical Society's final capital fundraising campaign edges closer to the finish of renovating the Palisade History Museum! Please help us reach our goal with a year-end donation. Send your check to P.O. Box 631, Palisade, CO 81526– or, for a credit or debit card, call (970) 464-2177 with card information. Donations over \$500 will still be acknowledged on the permanent Legacy Donor plaque on the building.

Volunteers Welcome!

Please contact us if you want to meet interesting people, learn more about Palisade history and/or work on committees, projects, fundraising, or creating displays for the new Palisade Historical Museum at the Bunte Shop. Send a message with your contact information to Gary at historicpalisade@outlook.com to learn how you can help. Right now, we are especially interested in volunteers to assist tour guides and hosts when the History Museum is open

Look for us on Facebook and Instagram: Palisade Historical Society

2020-2021 Directors of the Palisade Historical Society

Susan Barstow – susanbarstow.ak@gmail.com
Ralph Branch – branchcolorado@gmail.com
Jaime Cox – jaimejcox@gmail.com
Gay Hetland – ghetland@outlook.com
Gary Hines – gwhines@msn.com
Nancy Morrison – nancykmorrison@gmail.com
Priscilla Walker – pbwalker630@acsol.net
Charlene Weidner – charw@acsol.net

SMILE PURCHASES BENEFIT THE PALISADE HISTORICAL SOCIETY

For your on-line holiday shopping, please go to:

<https://smile.amazon.com>

On your first visit, you can use the same email and password as you set up for Amazon. Then, select Palisade Historical

Society from the Charity Lists. If you bookmark Amazon Smile, you will automatically be taken there instead of the regular Amazon site when you shop. Amazon will donate 0.5% of the price of your eligible Amazon Smile purchases. **You may need to renew or update your charity choice before your next purchase.**



YOUR PURCHASES AT CITY MARKET BENEFIT THE HISTORICAL SOCIETY

The Palisade Historical Society is thrilled to participate in the City Market Community Rewards Program. If you have a City Market loyalty card and have used the City Market's website, just log into: <http://www.citymarket.com> and search for the Palisade Historical Society. Select it as your designated community non-profit. It is another painless and amazingly effective way to support the Historical Society.



If you do not have an account, you will need to create one by providing some basic information, a valid email address, and a City Market loyalty card number. You can get a loyalty card at any King Soopers or City Market store's customer service desk. You must swipe your registered loyalty card or use the phone number attached to the card for your purchase to benefit the Palisade Historical Society.



Become a part of History - Donate to the Palisade Historical Society.

The Palisade Historical Society is a 501(c)(3) organization. Donations are tax-deductible.

The Historical Society relies on donations to facilitate projects that enhance our community by documenting local history and promoting our heritage. You can join us with your support in a targeted way that interests you most. Make a donation for any or all of the following categories:

- Become a member and enjoy notification of events and news
- Contribute to the **Palisade Tribune** Digitization Fund that will save invaluable Palisade history
- Donate to complete renovations for the Palisade History Museum at the Bunte Shop. It will feature displays and educational media to engage locals and visitors year-round.

MEMBERSHIP OPTIONS

Annual Memberships (check one)

Individual \$25 ☐ Family \$50 ☐ Business \$100 ☐ Patron \$500 ☐

Extended Memberships

10-year (Family or Individual) \$200 ☐ Lifetime (Family or Individual) \$400 ☐

PALISADE TRIBUNE DIGITIZATION FUND

We have raised funds to digitize 2,650 issues of **The Palisade Tribune** for Colorado Historic Newspaper Newspaper database website. Please help us get more issues online for browsing and searching from anywhere!

\$1,000 ☐ \$100 ☐ Other ☐ \$_____

PALISADE HISTORY MUSEUM AT THE BUNTE SHOP

We are in our final fundraising phase to open the Museum. Help us at any level.

\$1,000 ☐ \$500 ☐ \$100 ☐ Other ☐ \$_____

\$2,500 (receive a "Proud Supporter" sign) ☐

\$5,000 (advertise in the Museum for your business) ☐

The names of donors contributing \$500 or more will be included on a permanent legacy donor recognition sign displayed on the Museum. ('In memory of' or 'In honor of' may be noted)

For credit card payments, call (970) 464-2177.

For checks or money orders payable to Palisade Historical Society, mail them with your confidential contact information to: **Palisade Historical Society, PO Box 631, Palisade, CO 81526.**

Name _____

Address _____

City _____ State _____ Zip _____

E-mail (for newsletters) _____ Phone _____