

# PALISADE Historical Society

[www.historicpalisade.org](http://www.historicpalisade.org)

## VIRTUAL IRRIGATION HISTORY PROGRAM NOW AVAILABLE!

Historical Society member Gary Hines worked with the Mesa County Public Libraries to record his popular program “History of Irrigation in Palisade: Waters for the Valley” which is now available on the Library's YouTube channel! We appreciate the Libraries' Ike Rakiecki who contacted us and organized the recording, and Laura Mullenix, videographer and editor. You can see the 41- minute program by clicking on this link:

[https://www.youtube.com/watch?v=3SCUE1\\_ajow](https://www.youtube.com/watch?v=3SCUE1_ajow)

Gary's unique tie to the Palisade irrigation story is because his grandfather was the caretaker of the Grand River Diversion Dam for 33 years! Gary can augment historic information with interesting stories, especially from his mother's experiences growing up at the Roller Dam.

### History of Irrigation in Palisade

### *Waters for the Valley*

(Photo courtesy of the Marie Tipping Archives,  
Palisade Library Collection)



This video is a virtual journey through the past to look at how the vital irrigation systems we rely on for our way of life in the Grand Valley were developed. Although most of the valley's irrigation systems begin in or near Palisade, the program covers the valley-wide impact of these systems which bring the lifeblood of water to farms, orchards, vineyards, and residential users.

*(continued)*

## August 2020

While our Palisade History Museum is not open, nor are we able to present our programs on Palisade history to groups because of pandemic restrictions, we are excited to be able to offer this virtual program for everyone to view!

It has even more information than our booklet, *The History of Irrigation in Palisade and East Orchard Mesa, Colorado*. Printed copies of this booklet are available at Out West Books and the Museums of Western Colorado gift shop in Grand Junction as well as Lithic Bookstore and Gallery in Fruita.

## MUSEUM FUNDRAISING GOAL ALMOST MET!

The Palisade Historical Society's final capital fundraising campaign has almost reached the amount needed to finish renovating the Palisade History Museum in hopes of opening this fall. Please help us reach our goal with a donation – by check to P.O. Box 631, Palisade, CO 81526 – or for a credit card, call (970) 464-2177 with your card information. Donations over \$500 will be acknowledged on the permanent Legacy Donor plaque on the building.

## PALISADE TURNS PURPLE!

Despite economic challenges from the Coronavirus, three new businesses have opened in downtown Palisade this summer. First to open were the Purple Bee and Hummel Real Estate in what was the long time Palisade Liquor Store at 213 South Main Street (Stop #5 in our Walking Tour brochure). Since the 1920s, the first floor of the building was the Palisade Liquor Store until 2007. After that, it has been a series of stores including a gift shop, and a wine shop, and was recently vacant for some time. Both businesses are owned by Ronda Hummel.

The north side is the Palisade office of Hummel Real Estate which also has a downtown Grand Junction office. The south side is her farm store for The Purple Bee which carries culinary lavender and dried lavender and distills their own lavender oils.

*(continued)*

*Page 1*



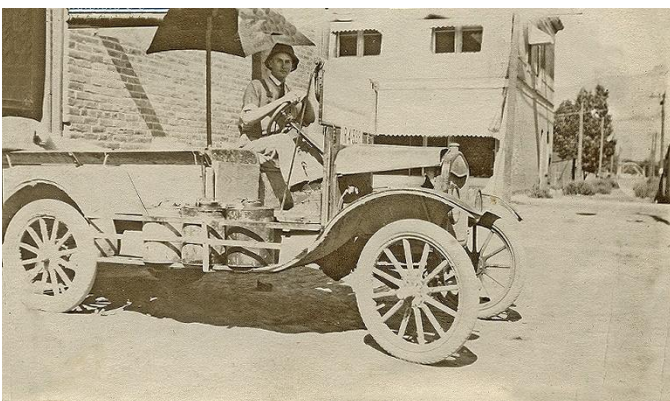
Former Palisade Liquor Store 213 So. Main Street



Hummel Real Estate and The Purple Bee

The long-awaited Purple Cow Coffee Shop—and our newest Historical Society Business Member—is now open in the back space of the Hugus Building 301 South Main St. (Stop #27 in our Walking Tour brochure), This locally owned coffee shop features coffee, espresso, breakfast, and lunch fare, as well as delicious soft serve ice-cream. It is open seven days  
(continued)

Paul Rice in the J. W. Hugus & Co. delivery truck – at the “drive-up” window before 1923!



a week from 7-3. There are drive-up and walk-up windows in addition to inside service at the classic soda fountain where you will soon enjoy historic photos of the Hugus Building. A new parklet was recently added on South Main Street to accommodate socially distanced outside dining.



Purple Cow Coffee Shop drive-up window masterfully built by expert carpenter S.P. Valentine

## HISTORICAL SOCIETY JOINS WITH PALI-TOURS TO OFFER GROUP HISTORY TOURS

### PALISADE HISTORICAL TOURS

GET AN INSIDER'S VIEW OF PALISADE'S FASCINATING PAST

(970) 697-8134

**PALISADE** Historical Society  
www.historicpalisade.com

Still Walkers' 1930 photo courtesy of Bill Floryancic

**Pali-Tours and the Palisade Historical Society are joining up to take a trip into the past. Call to arrange your tour today!**

Another option to safely learn about Palisade history during the pandemic are guided tours. Dave Smith, operator of Pali-Tours, has partnered with the Historical Society to add new tours featuring Palisade's unique history. The 2½ hour tours for groups of four to ten people will be in “Pinzy,” a 1975 Pinzgauer 6X6 made in Austria for the Swiss Military. Historical Society volunteers narrate the tours and show historic photos about Palisade's interesting agriculture and coal mining past. Dave drives an adventuresome route around historic Palisade sites.  
(continued)

Groups of four or more should contact Pali-Tours at (970) 697-8134 for more information. The tours will be offered weekday mornings, depending on demand.

## **Volunteers Welcome!**

Please contact us if you want to meet interesting people, learn more about Palisade history and/or work on committees, projects, and fundraising for the new Palisade Historical Museum at the Bunte Shop. Send a message with your contact information to Gary at [historicpalisade@outlook.com](mailto:historicpalisade@outlook.com) to learn how you can help. Right now, we are especially interested in volunteers to assist tour guides and hosts when the History Museum is open.

## **YOUR PURCHASES AT CITY MARKET BENEFIT THE HISTORICAL SOCIETY**

The Palisade Historical Society is now participating in the City Market Community Rewards Program. If you have a City Market loyalty card and have used the City Market's website, just log into: <http://www.citymarket.com> and search for the Palisade Historical Society. Select it as your designated community non-profit. It is another painless way to support the Historical Society.



New users will need to create an account which requires some basic information, a valid email address and a loyalty card number. You can get a loyalty card at any King Soopers or City Market store's customer service desk. You must swipe your registered loyalty card or use the phone number attached to the card for your purchase to benefit the Palisade Historical Society.

**Look for us on Facebook  
and Instagram:**

**Palisade Historical Society**

## **2020-2021 Directors of the Palisade Historical Society**

Susan Barstow – [susanbarstow.ak@gmail.com](mailto:susanbarstow.ak@gmail.com)  
Ralph Branch – [branchcolorado@gmail.com](mailto:branchcolorado@gmail.com)  
Jaime Cox – [jaimejcox@gmail.com](mailto:jaimejcox@gmail.com)  
Gay Hetland – [ghetland@outlook.com](mailto:ghetland@outlook.com)  
Gary Hines – [gwhines@msn.com](mailto:gwhines@msn.com)  
Nancy Morrison – [nancykmorrison@gmail.com](mailto:nancykmorrison@gmail.com)  
Priscilla Walker – [pbwalker630@acsol.net](mailto:pbwalker630@acsol.net)  
Charlene Weidner – [charw@acsol.net](mailto:charw@acsol.net)

## **AMAZON SMILE PURCHASES BENEFIT THE PALISADE HISTORICAL SOCIETY**

For your on-line shopping, please go to:  
<https://smile.amazon.com>

On your first visit, you can use the same email and password as you set up for Amazon. Then, select Palisade Historical

Society from the Charity Lists. If you bookmark Amazon Smile, you will automatically be taken there instead of the regular Amazon site when you shop. Amazon will donate 0.5% of the price of your eligible Amazon Smile purchases.



## **PALISADE TIMELINE ON THE MUSEUM'S WEBSITE**

Stephanie Lukowski, Curator of Education at the Museums of Western Colorado, updated educational materials on the Museum's Website, including a more graphic look for our Palisade historic timeline. The new link to Palisade's history – from 1881 to the 2000s is:

<https://museumofwesternco.com/palisade-history/>



## Become a part of History - Donate to the Palisade Historical Society.

The Palisade Historical Society is a 501(c)(3) organization. Donations are tax-deductible.

The Historical Society relies on donations to facilitate projects that enhance our community by documenting local history and promoting our heritage. You can join us with your support in a targeted way that interests you most. Make a donation for any or all of the following categories:

- Become a member and enjoy notification of events and news
- Contribute to the **Palisade Tribune** Digitization Fund that will save invaluable Palisade history
- Donate to complete renovations for the Palisade History Museum at the Bunte Shop. It will feature displays and educational media to engage locals and visitors year-round.

### MEMBERSHIP OPTIONS

#### Annual Memberships (check one)

Individual \$25 ☐    Family \$50 ☐    Business \$100 ☐    Patron \$500 ☐

#### Extended Memberships

10-year (Family or Individual) \$200 ☐    Lifetime (Family or Individual) \$400 ☐

### PALISADE TRIBUNE DIGITIZATION FUND

We have raised funds to digitize 2,650 issues of **The Palisade Tribune** for Colorado Historic Newspaper Newspaper database website. Please help us get more issues online for browsing and searching from anywhere!

\$1,000 ☐    \$100 ☐    Other ☐ \$ \_\_\_\_\_

### PALISADE HISTORY MUSEUM AT THE BUNTE SHOP

We are on our way to opening in the summer of 2020. Help us with any level.

\$1,000 ☐    \$500 ☐    \$100 ☐    Other ☐ \$ \_\_\_\_\_

\$2,500 (receive a "Proud Supporter" sign) ☐

\$5,000 (advertise in the Museum for your business) ☐

The names of donors contributing \$500 or more will be included on a permanent legacy donor recognition sign displayed on the Museum. ( 'In memory of' or 'In honor of' may be noted )

For credit card payments, call (970) 464-2177.

For checks or money orders payable to Palisade Historical Society, mail them with your confidential contact information to: **Palisade Historical Society, PO Box 631, Palisade, CO 81526.**

Name \_\_\_\_\_

Address \_\_\_\_\_

City \_\_\_\_\_ State \_\_\_\_\_ Zip \_\_\_\_\_

E-mail (for newsletters) \_\_\_\_\_ Phone \_\_\_\_\_