

PALISADE Historical Society

www.historicpalisade.org

SPRING DAY ON THE FARM AT CROSS ORCHARDS IS MAY 4



CROSS ORCHARDS
ESTABLISHED 1872
MUSEUMS OF WESTERN COLORADO

*Spring Day
on the Farm*

May 4 • 9 am-4 pm

Cross Orchards Historic Site
3073 F Road, Grand Junction

**MUSEUMS
of WESTERN
COLORADO**

museumofwesternco.org
970.261.7839

\$7/Adults; \$4/Kids (3-12);
\$5/Seniors and Veterans
\$20/Family groups
\$1 off for members

The Palisade Historical Society will again participate in “Spring Day on the Farm” on May 4th. Our featured activities include how peaches were put into baskets or wrap-packed for shipping 60 years ago. There will also be activities for children.

As Palisade’s fresh peach season will not have begun, experienced packers will make do with peach-shaped squeeze balls. Everyone interested in trying their hand at wrap-packing peaches in wooden boxes will receive a nickel—which is what most seasonal peach packers were paid for professionally fitting 16 pounds of fruit in an entire box in the 1950s and 1960s!



(Photo Courtesy of the Washington Duncan Collection)

April 2019

For Cross Orchard’s April 7th “Day in the Orchard” event, our display included photos of orchard activities—including planting, irrigating, pruning, thinning, and harvesting. We also showed a pair of stilts, a ladder and a picking sack which made working in fruit orchards faster and easier.

TAYLOR ELEMENTARY SECOND GRADERS ENJOY HISTORIC COLORING BOOKS



Mrs. Kragenbring (back row center) and her second grade class with Historical Society’s Shirley Voorhees (back row, left) and Priscilla Walker, and instructional assistant Roseanne Blankenship (back row, far right).

We presented *Historic Palisade Coloring Books* and answered questions about Palisade’s history to three classes of 2nd graders at Taylor Elementary earlier this month. We appreciate their teachers—Mrs. Kragenbring, Ms. Zemke, and Mrs. Anders—and instructional assistant Roseanne Blankenship’s interest in using information from the Coloring Book for their local history curriculum.

A picking sack, a pair of stilts, and a piece of coal are also used to illustrate Palisade’s interesting history. Among the students favorite illustrations were the map of Palisade, pruners on stilts, Mt. Garfield, and drawing of all the fruit available in the Palisade area. Thanks to area Rotary Clubs, elementary school students receive these Coloring Books at no cost.

(continued)



Mrs. Anders' second grade students with Palisade Historical Society's Shirley Voorhees holding stilts and Priscilla Walker standing in the back row.



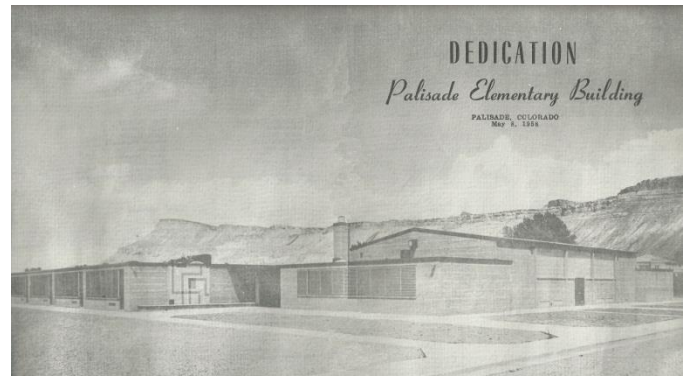
Shirley Voorhees, back row left, with Mrs. Zemke and her second grade class students.

TAYLOR ELEMENTARY CELEBRATES 60 SCHOOL YEARS

Taylor Elementary Principal Jennifer Morrell and staff are hosting an **ice-cream social** at the school on **May 14th from 4:15-5:30 p.m.** All former students, teachers, and the community are invited to attend the free event.

The building on Brentwood Drive was dedicated as Palisade Elementary in May 1958. The first full school term was the 1958-59 school year. Palisade Elementary students attended most of the 1957-1958 school year in the three-story building constructed in 1910 on the north side of Highway 6 which also housed junior high school classes.

(continued)



Palisade Elementary's principal was initially Avon E. Taylor, long-time educator in the Palisade and Mt. Lincoln school districts. When he retired in 1959, the students wanted to honor him by changing the school's name. That was officially done with a resolution by the school board and an elaborate ceremony held at the school May 17, 1960. It was attended by at least two families with three generations of students he taught.



Vern Carnahan, left, with his daughter, Lena Ruth Hampton, and her daughter Mary Edith Hampton were three generations of Avon E. Taylor's students who attended the official ceremony to change the name to Taylor Elementary in May 1960. *(Photo courtesy of Barb Hampton)*

GRAND VALLEY SCOTTISH GAMES AND CELTIC FESTIVAL MAY 18TH & 19TH

New this year is a local festival where people can connect with their Scottish roots. To register your clan and find out more about the Pipe Bands and Solo Competitions, Highland Games and Athletics, and other entertainment, go to their website: <https://gvsqcf.wixsite.com/mysite>. This event will be held at the Mesa County Fairgrounds at Veterans Memorial Park 2785 U.S. Highway 50, in Grand Junction.

Page 2

BILL BECKWITH PASSED AWAY APRIL 3

We are sad that Founding Board Member and Treasurer of the Palisade Historical Society passed away. He was 83. Bill served on the Chamber of Commerce's history committee starting in 2009 and then continued on the Historical Society's Board of Directors until retiring last year. He was a tireless volunteer for our events as well as providing financial support to get the organization started. He was an amazing source of knowledge and support for Palisade history. When the History Center was open on Main Street, Bill was a regular volunteer and enjoyed greeting visitors and reminiscing with long-time residents. We miss him greatly and send positive thoughts to his family and devoted cat, Miss Kitty. The memorial services for Bill will be held Saturday, April 27th at 1 p.m. at the Palisade United Methodist Church.



Bill Beckwith at the History Center in 2012

PALISADE HISTORY ON MUSEUMS' WEBSITE

The Museums of Western Colorado has our detailed timeline and photos of Palisade history as part of the Grand Valley's history on its Website: <https://museumofwesternco.com/learn/history-of-grand-valley/palisade-history/>

You can see highlights and photos about Palisade—by decade and years—from the 1880s to the 2010s.

STUB PUMPING PLANT CELEBRATES 100th BIRTHDAY

The United States Reclamation Service (USRS) constructed the Price-Stub pumping plant located near the Government Highline Canal northeast of Palisade in early 1919. Previously, irrigation water for both canals came from a jointly-operated pumping plant supplied with water from the Grand River. Though they were pioneers in water-power development for irrigation, these early plants were inefficient, expensive to maintain and extremely wasteful in their use of water power. *(continued)*



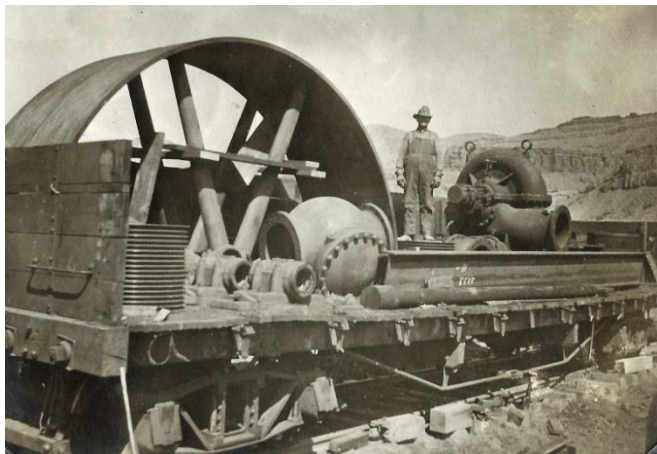
U.S.R.S. (United States Reclamation Service) and the construction year, 1919, are still visible on the Stub Pumping Plant's 100 year old building in this recent photo.



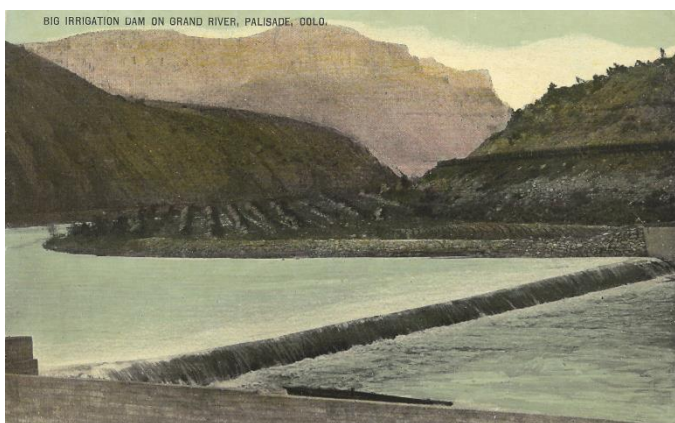
An early view of the Price-Stub pumping plant when it pumped water uphill into the Stub Ditch's wooden flume (lower right). Price Ditch water flows downhill into the canal just south and west of the pumping plant at this location. *(Photo courtesy Orchard Mesa Irrigation District)*

(continued on the next page)

**Look for us on Facebook:
Palisade Historical Society**



Original pumping plant equipment for what was the Mesa County Irrigation District Canal was shipped via the railroad (*Photo courtesy Bowman Family Collection*)



The Diversion Dam initially serving both the Price and Stub canals was constructed in 1910. This dam was abandoned in 1917 when water for the canals was provided by the Government Highline Canal which flows from the Grand River Diversion Dam in DeBeque Canyon. (*Photo courtesy of the Marie Tipping Archives*)

2019-2020 Directors of the Palisade Historical Society

- Ralph Branch – branchcolorado@gmail.com
- Jaime Cox – jaimejcox@gmail.com
- Gay Hetland – ghetland@outlook.com
- Gary Hines – gwhines@msn.com
- Nancy Morrison — nancykmorrison@gmail.com
- Frank Nemanich—westiecolorado@bresnan.net
- Priscilla Walker — pbwalker630@acsol.net
- Charlene Weidner — charw@acsol.net

Sign Up or Renew Your Membership Today!

We are an all-volunteer, non-profit organization. Everyone is invited to belong to the Palisade Historical Society—through volunteer time with committees and projects—and by membership.

Annual memberships in the Palisade Historical Society start at just \$25 for Individuals, \$50 for Families, \$100 for Businesses, and \$500 for Patrons. There are also 10-year memberships for \$200 and Lifetime memberships for \$400. If you haven't signed up—or it's time to renew your membership—please do so today! Mail your tax-deductible checks to the **Palisade Historical Society, P.O. Box 631, Palisade, CO 81526.**



Thanks to our generous donors, grants from CHRAB, and support from the Colorado Historic Newspaper Collection, we have raised funds to digitize 2,262 issues of *The Palisade Tribune* for the Colorado Historic Newspaper database website:
www.coloradohistoricnewspapers.org

Please help us get more issues digitized!

Yes, I would like to help digitize historic *Palisade Tribune* newspapers

Name _____

Address _____

City _____

State _____ Zip Code _____

\$1,000.00 \$100.00 Or \$_____ enclosed

Please enclose check or money order **payable to the Palisade Historical Society** and mail to:
 P.O. Box 631, Palisade, CO 81526